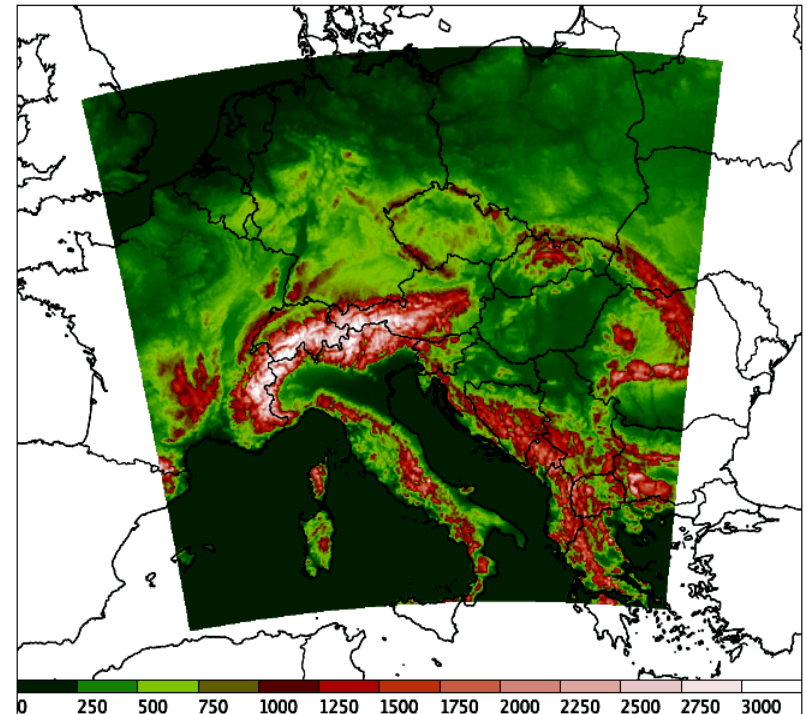
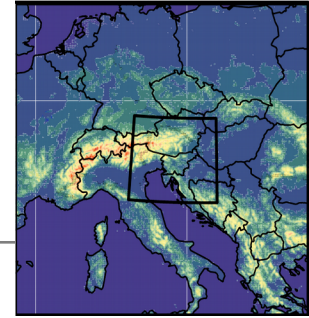

Towards 1-h RUC: Perspectives in Slovenia

ALADIN-Slovenia

- ALARO-0 cy35t1, 4.4 km resolution, 87 levels
- 3-hourly data assimilation, 8 production runs (72 or 36 h); starting at 1:45, 4:45, 7:45 UTC
- 3D-Var + CANARI + SST replacement
- Space-consistent coupling (no separate initialization)
- Climatological background errors

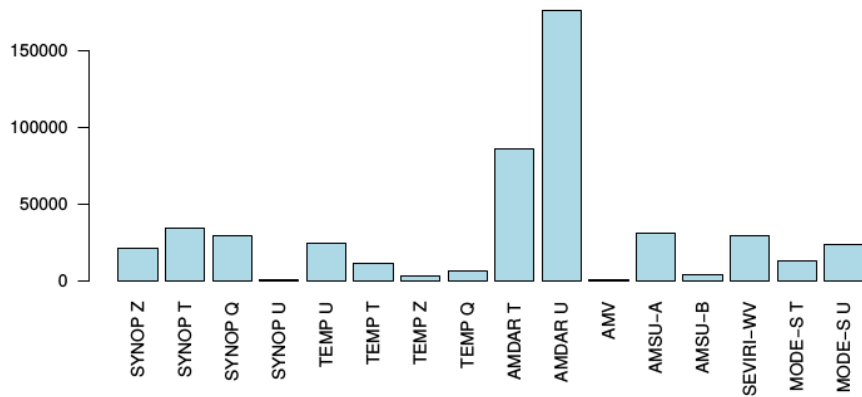


Impact of observations - DFS

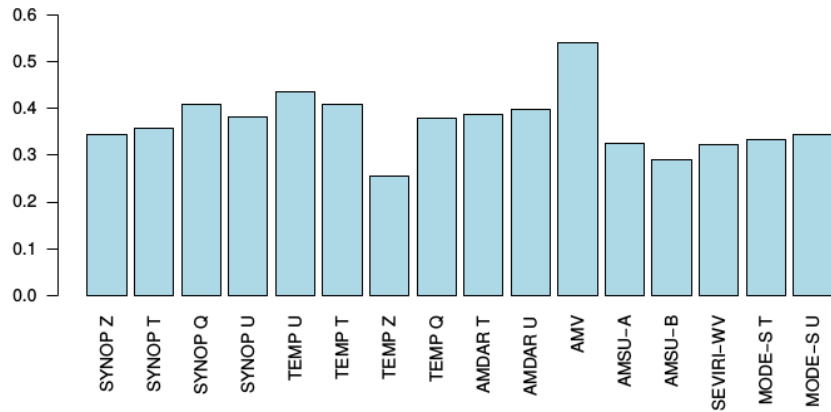


Full domain

Absolute Degree of Freedom for Signal (DFS)

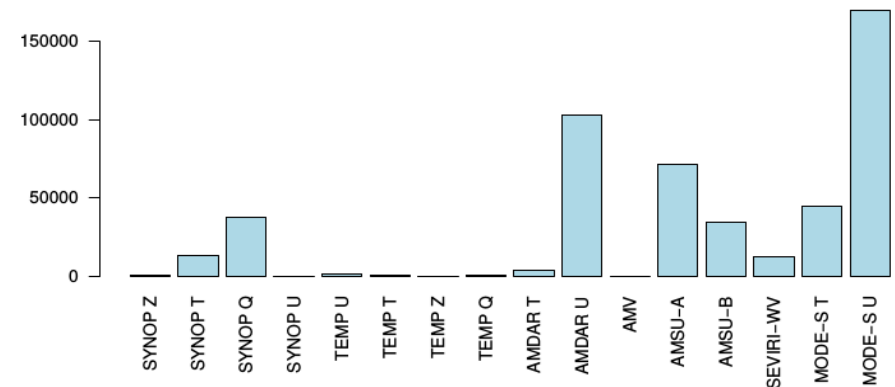


Relative Degree of Freedom for Signal (DFS/observations)

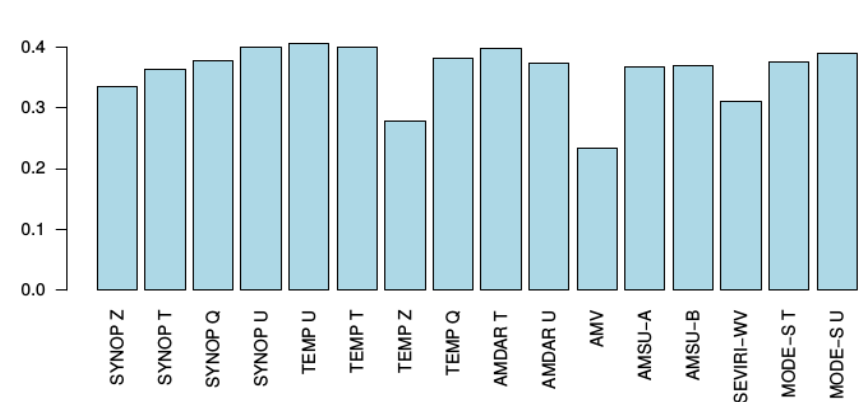


Zoom over Slovenia

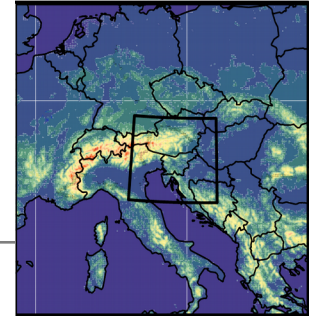
Absolute Degree of Freedom for Signal (DFS)



Relative Degree of Freedom for Signal (DFS/observations)



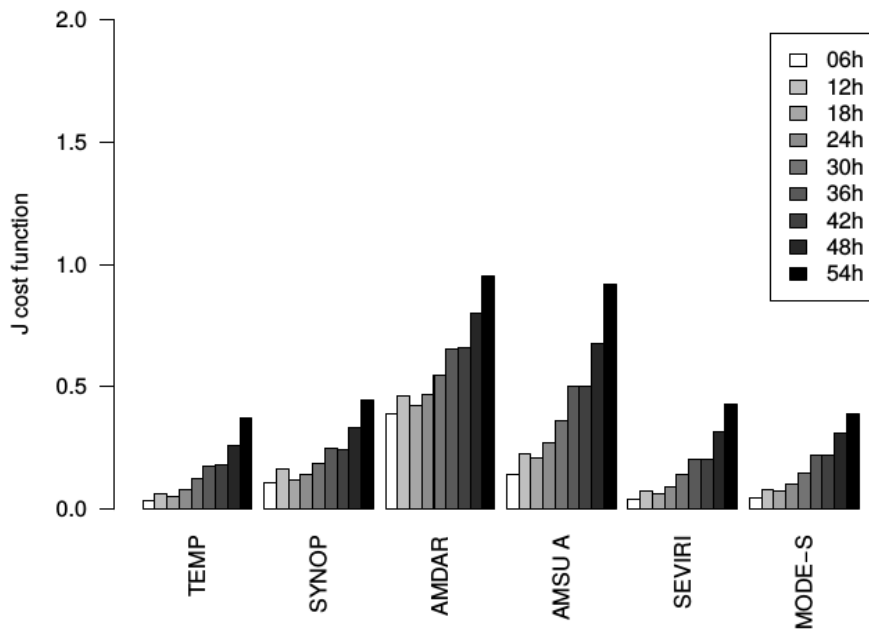
Impact of observations on forecast - MTEN



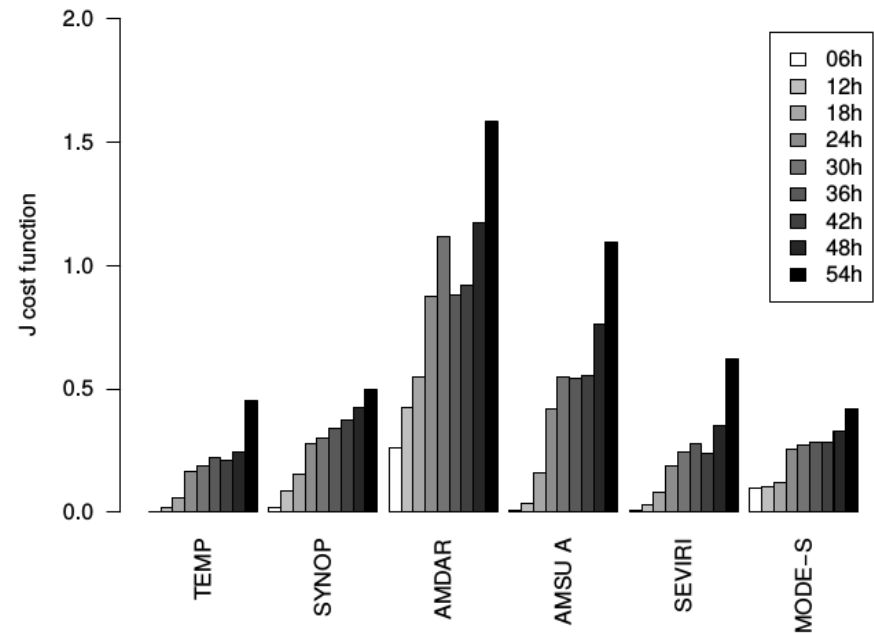
Full domain

Zoom over Slovenia

Normalized cost function
for forecasts initialized at 6 UTC



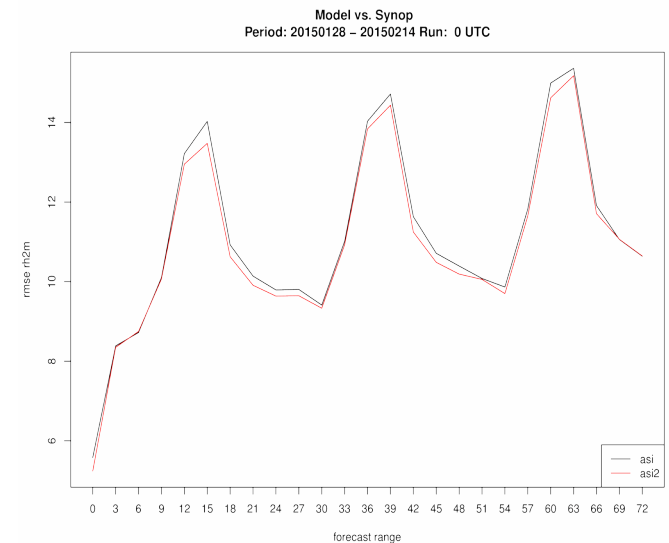
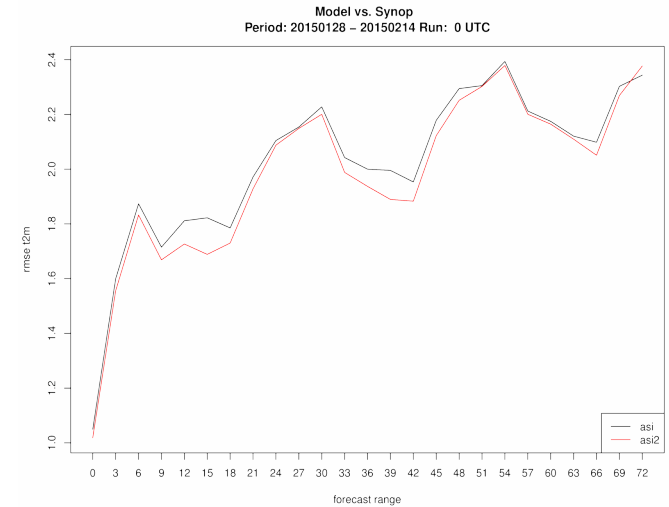
Normalized cost function
for forecasts initialized at 6 UTC



High-frequency observations

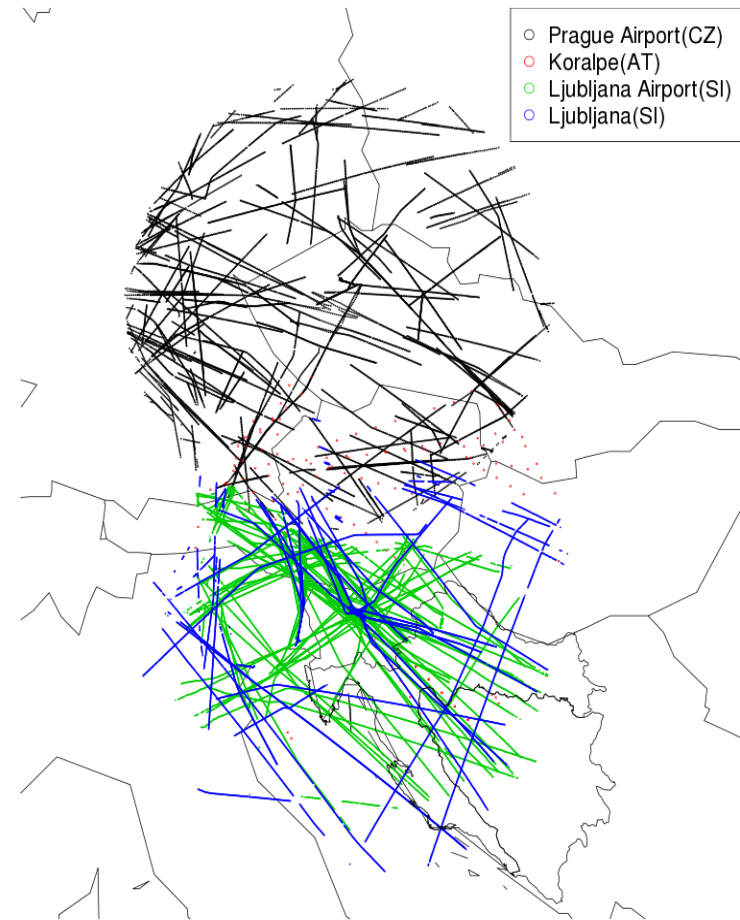
- Surface automatic stations
- Radar (implementation postponed in SI)
- Mode-S aircraft observations
- Ground GPS (E-GVAP and local data)
- Geostationary satellite (reflectivity, winds)

Surface (automatic) observations

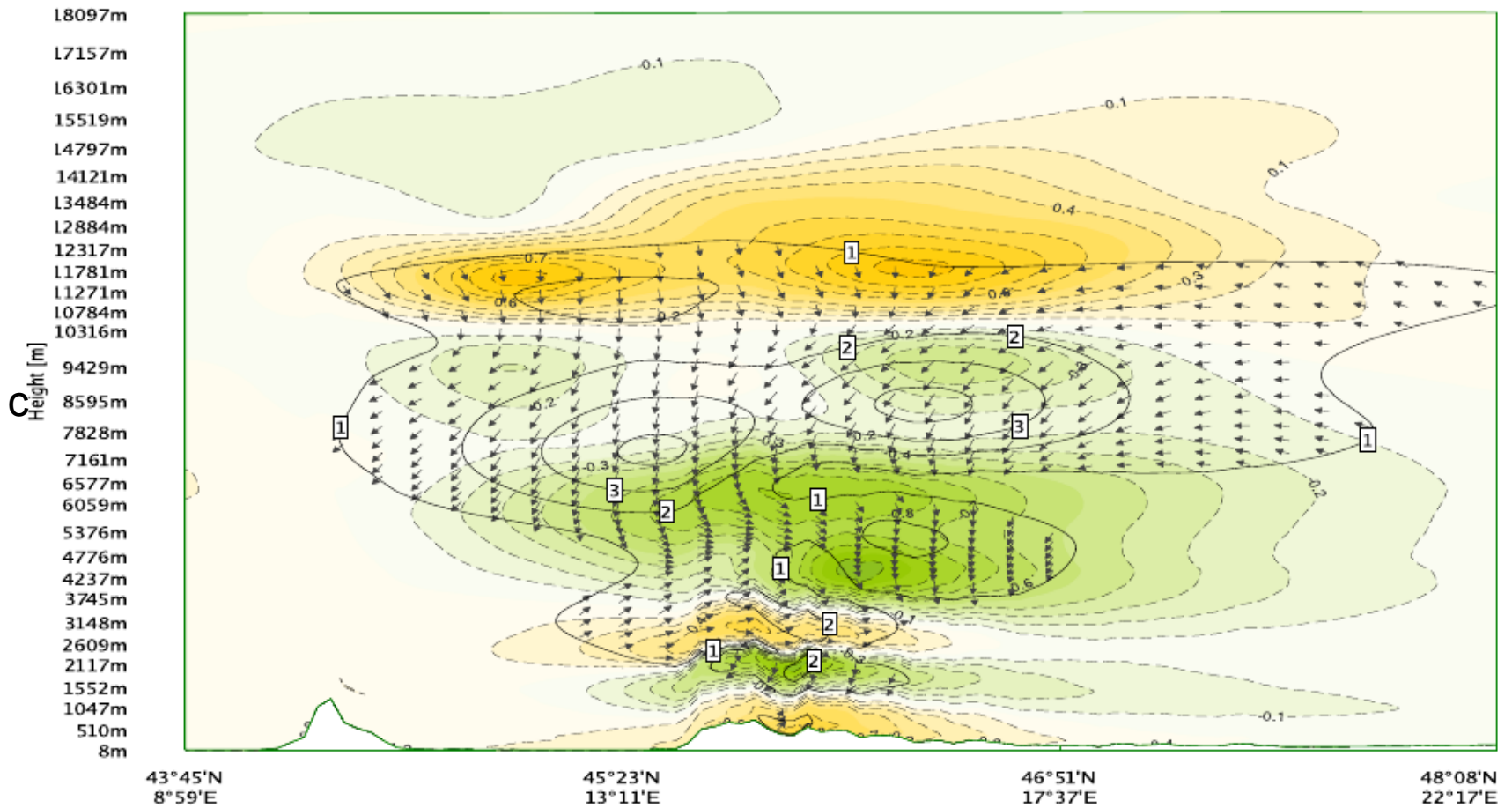


Expanding Mode-S network

- Currently 4 radars are receiving Mode-S MRAR (2xSI, CZ, AT)
- Operational in Slovenia
- Contains wind and temperature, no humidity
- Exchange did not start
- A goal: make it free for LACE NMS if possible!

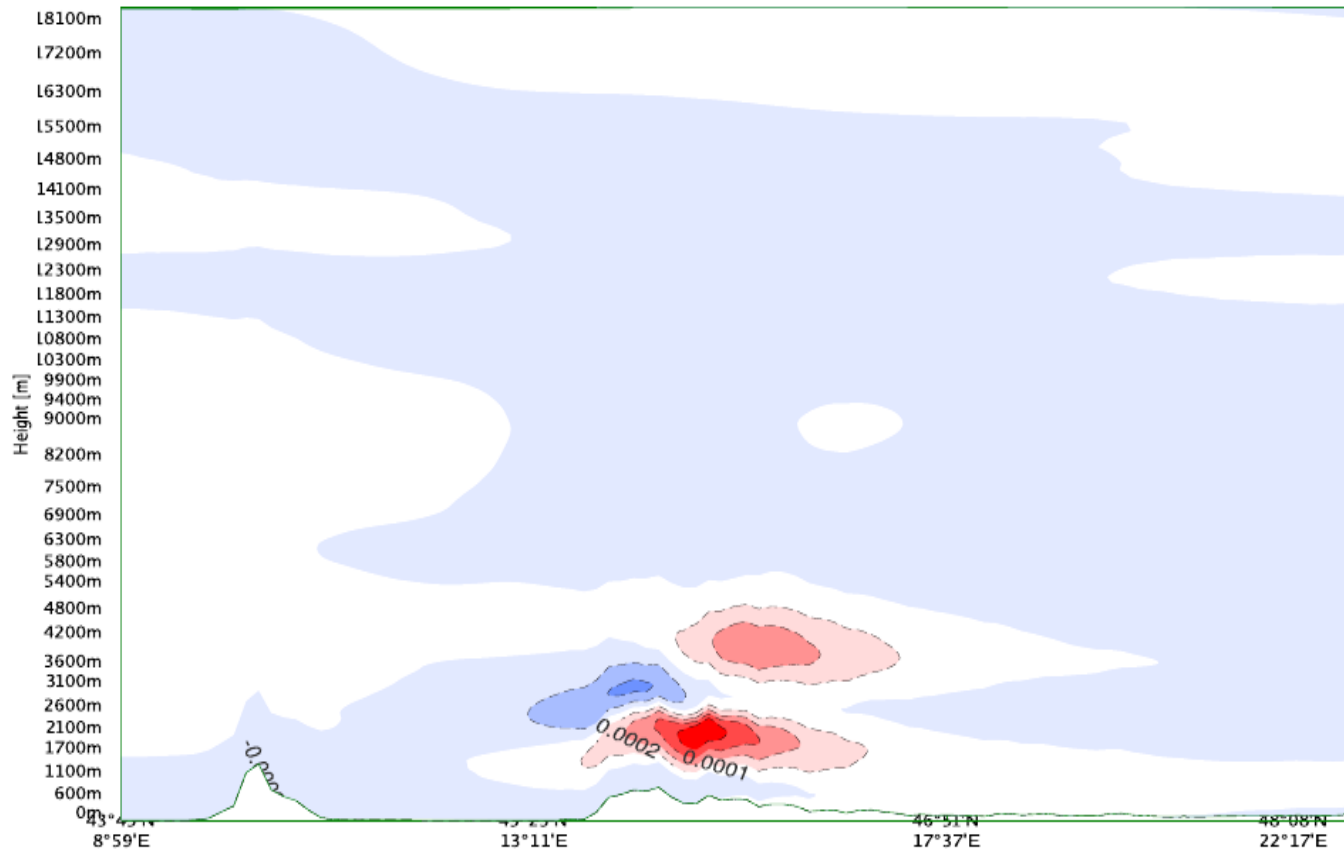


Increment caused by Mode-S



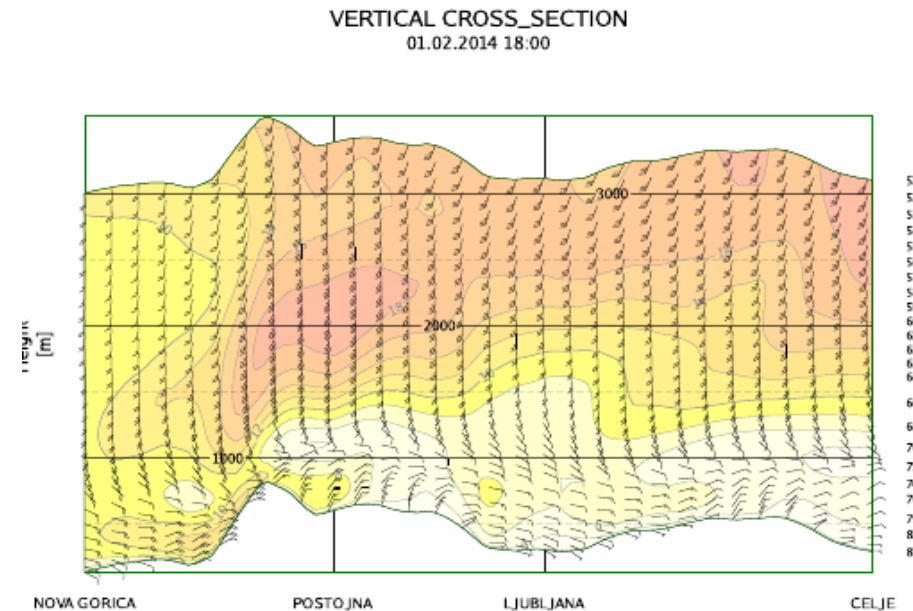
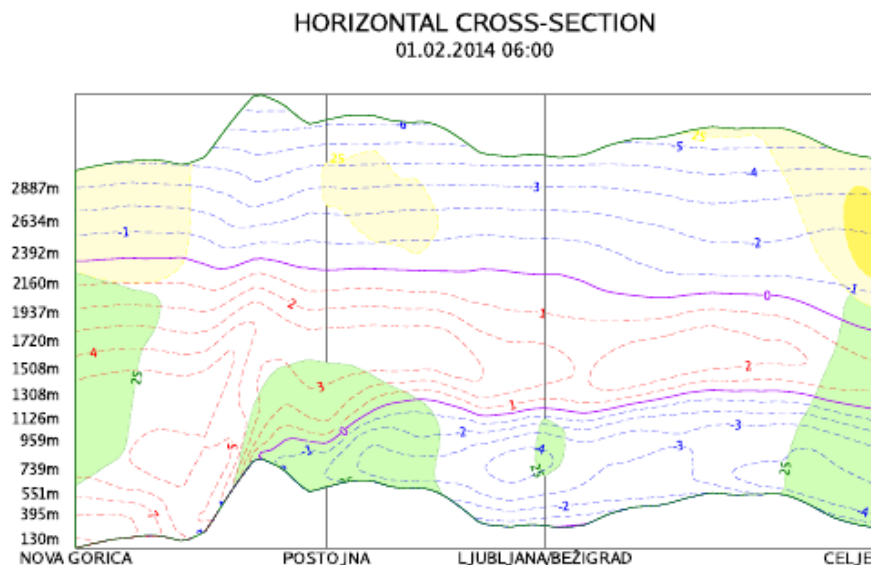
Increment caused by Mode-S (2)

- If no humidity is available, analysis relies critically on multivariate relation in background errors

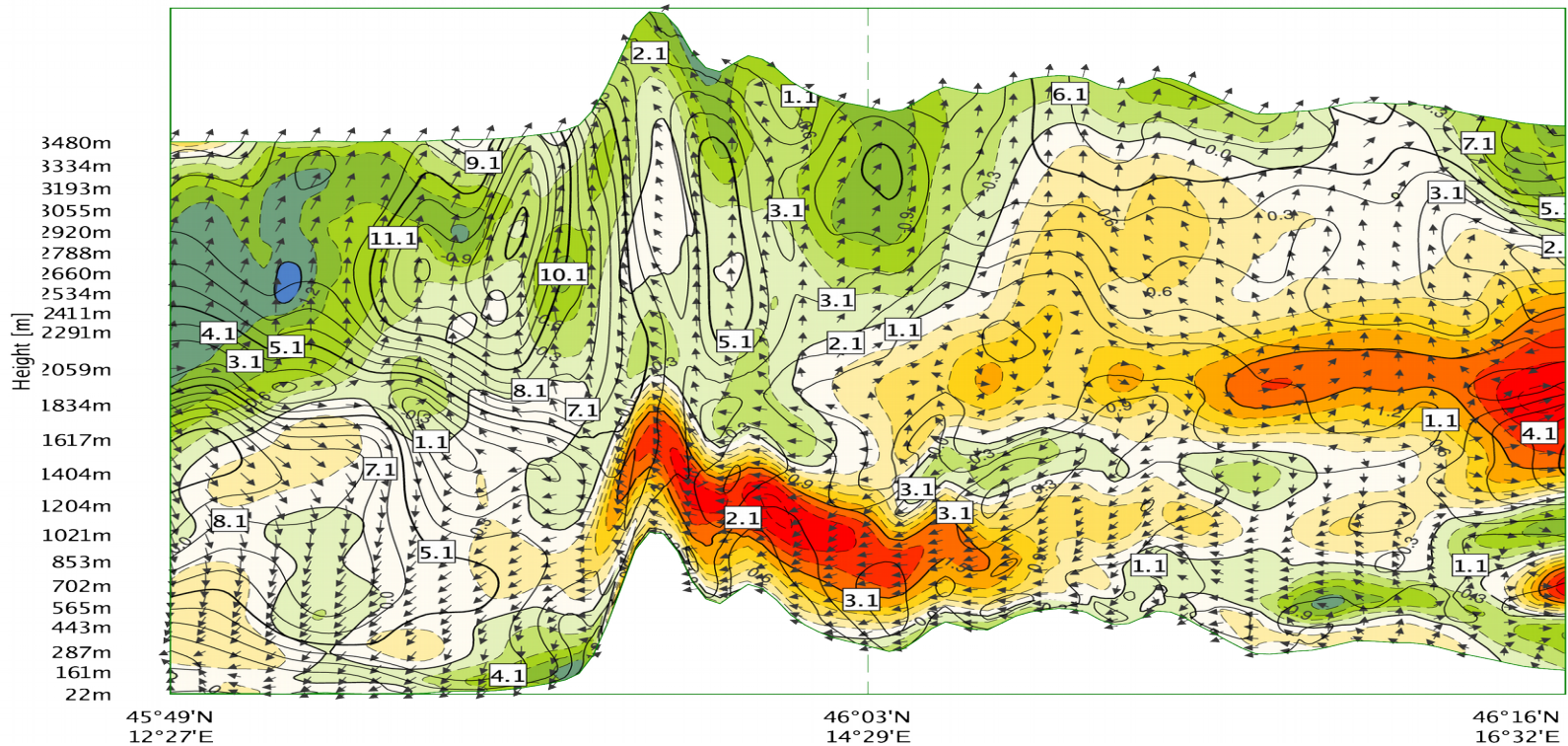


Very preliminary issues in 1-h RUC: a case of freezing rain storm

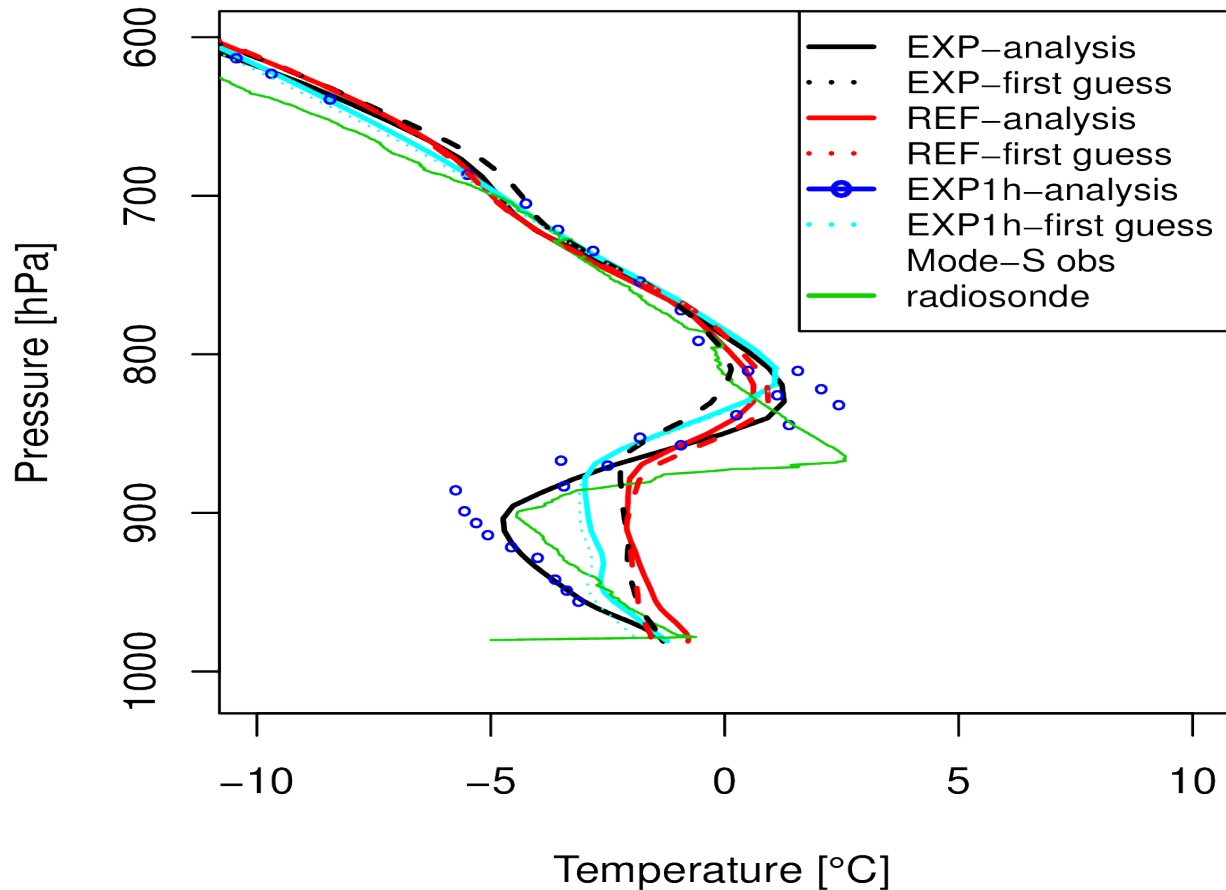
- Jan/Feb 2014: Severe and persistent freezing rain over Slovenia
- Potential value of rapidly available NWP for nowcasting applications (railways, electricity infrastructure)



RUC 3h vs. RUC 1h - analysis

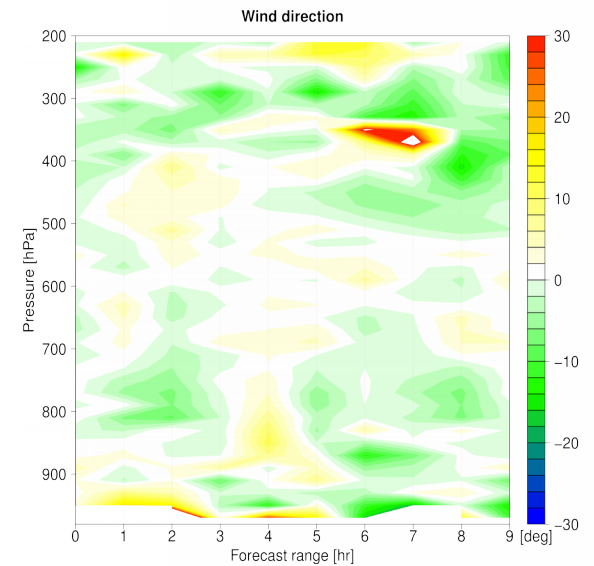
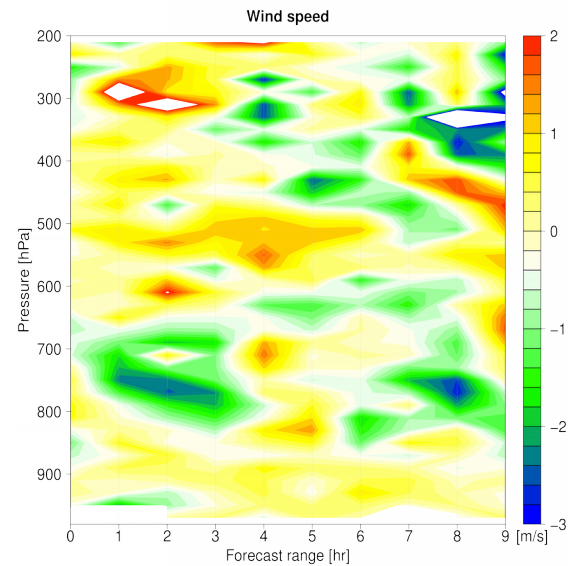
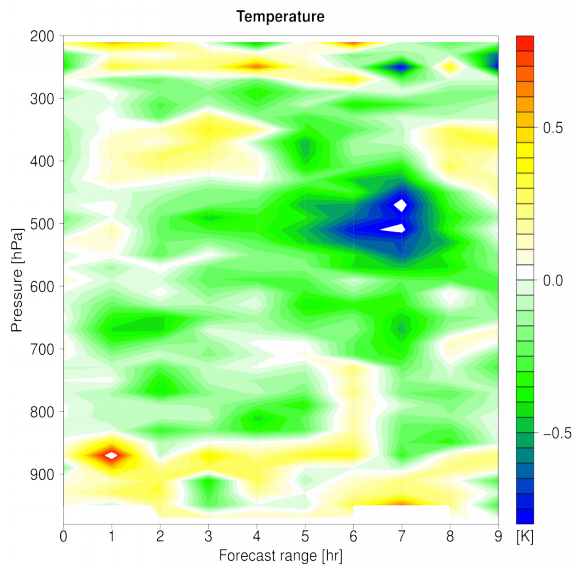


RUC 3h vs. RUC 1h - analysis



RUC 3h vs. RUC 1h -forecast

- scores against Mode-S: 31 Jan – 3 Feb 2014 (4 runs per day)



Questions

- Is there enough observations?
- Fluctuations due to different observation structure (users concerned/puzzled already with run-to-run variability in 3-h cycle)
- Is space-consistent coupling still appropriate?
- Sampling of background errors in spin-up mode?