

VARBC study using cycled and
global coefficients in
ALARO/Slovenia

Motivation

- ▼ Occasional significant fluctuations of the operational VarBC coefficients, still unresolved
- ▼ Idea: Try global Var-BC coefficients from ARPEGE with no updates

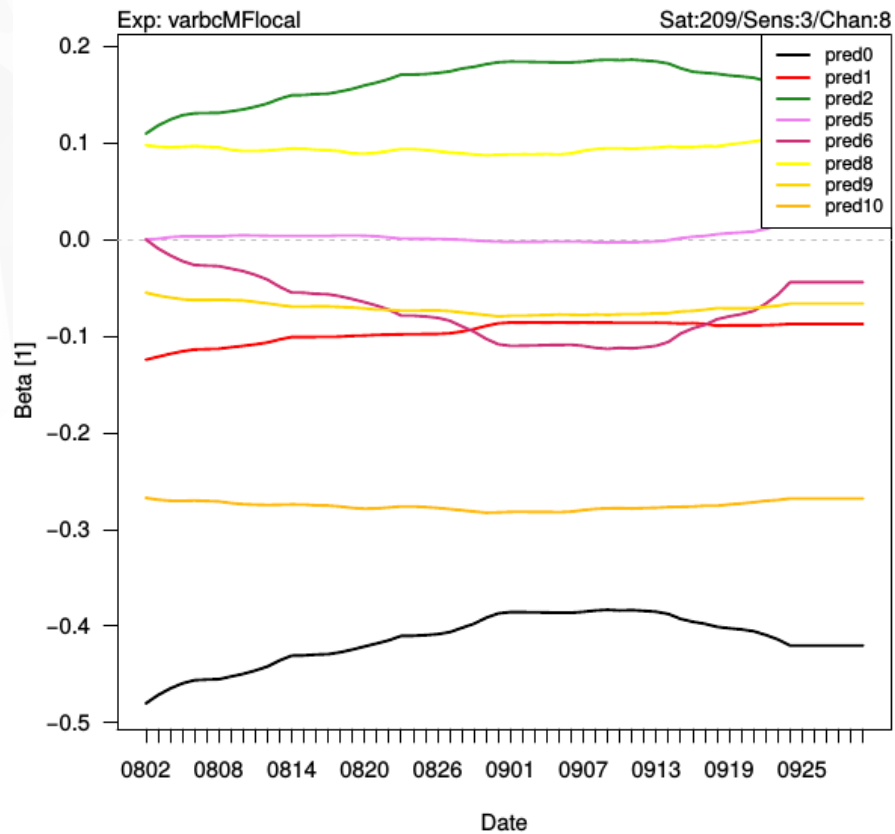
Experiment design

- ▼ Observations: NOAA 16,19, METOP A,B AMSU A,B/MH
- ▼ No SEVIRI (not available in ARPEGE)
- ▼ Period Sep-Oct 2015
- ▼ Start : 1 Aug, using global VarBC
- ▼ Locally cycled vs. global experiment

NOAA 18 – AMSU-A

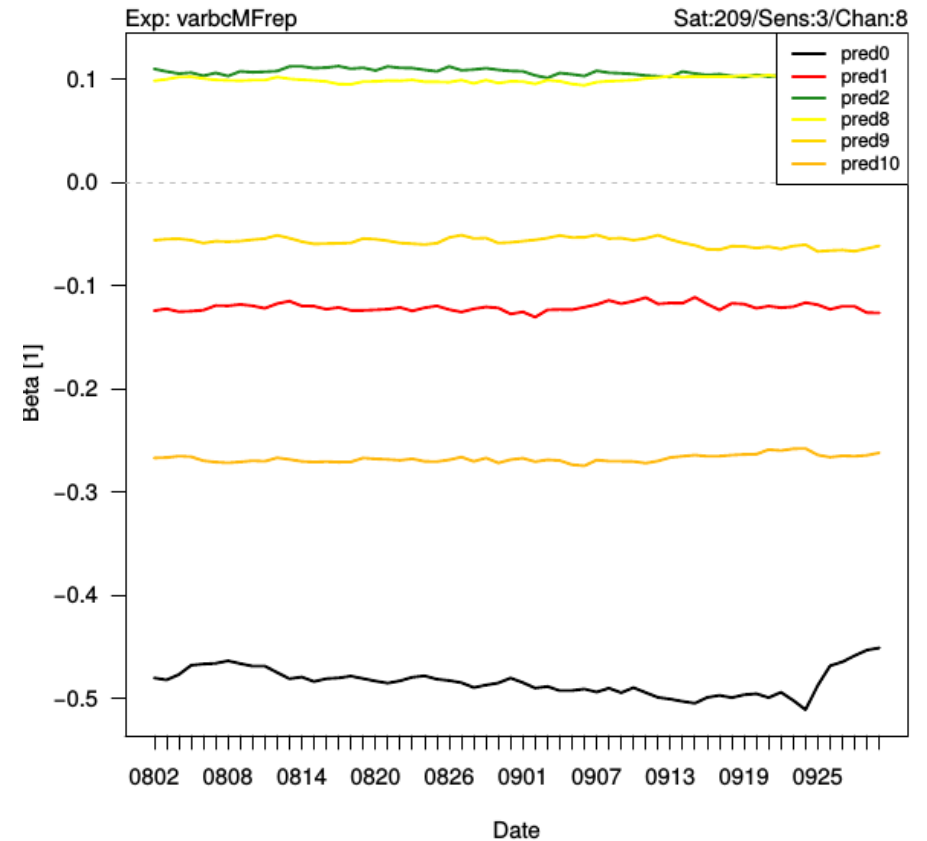
Cycled in LAM

Evolution of bias parameters



MF

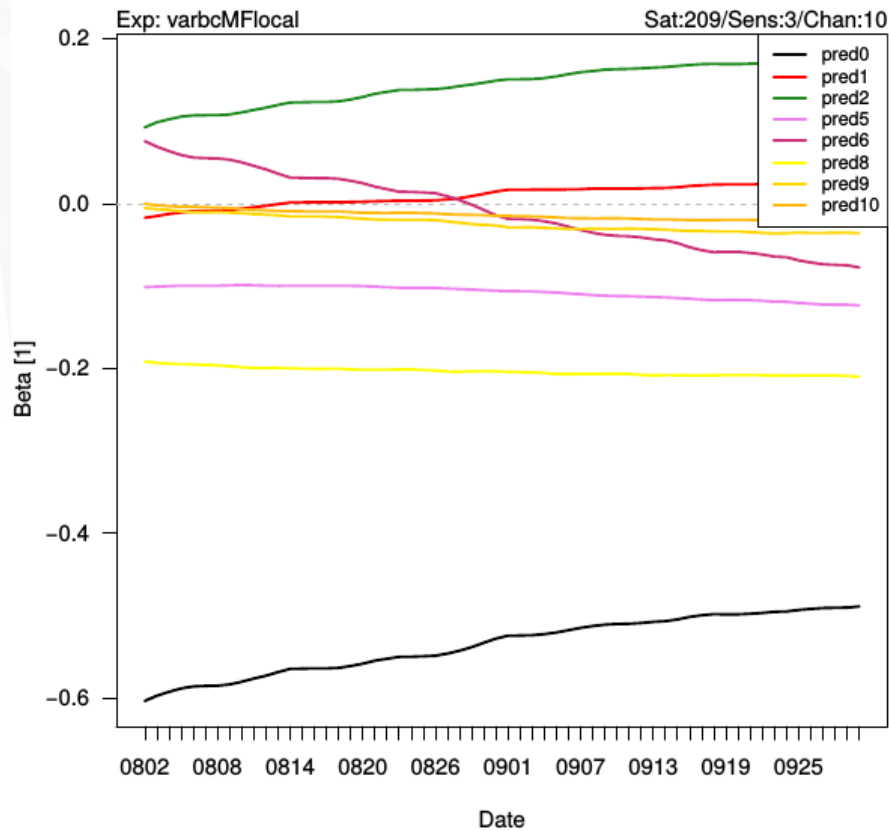
Evolution of bias parameters



NOAA 18 – AMSU-A

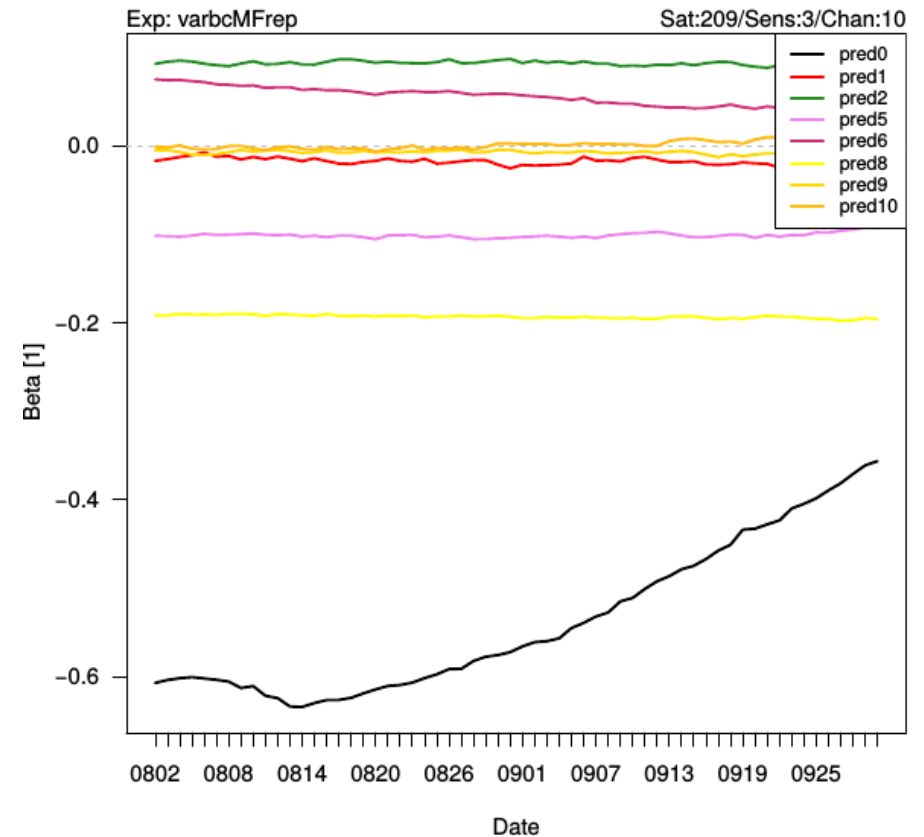
Cycled in LAM

Evolution of bias parameters



MF

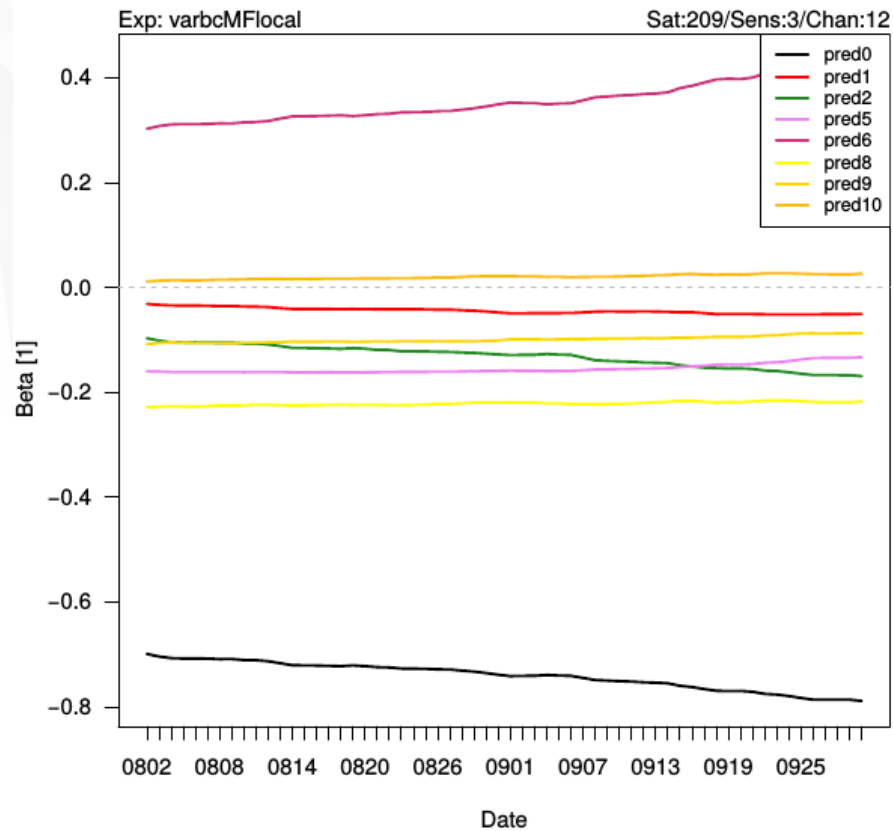
Evolution of bias parameters



NOAA 18 – AMSU-A

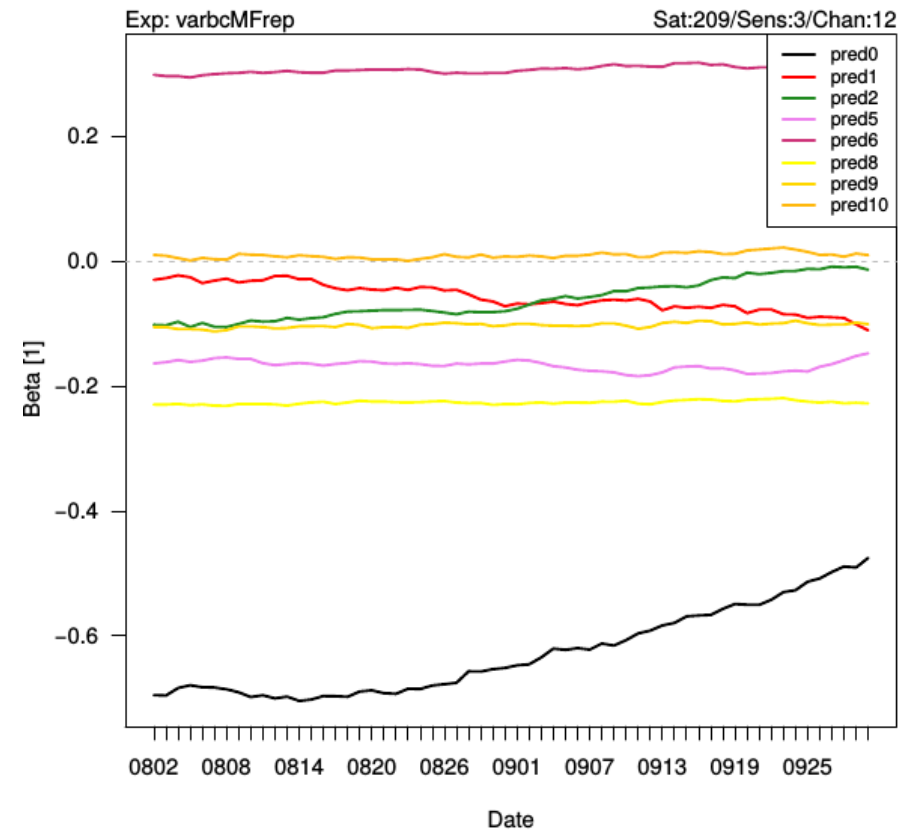
Cycled in LAM

Evolution of bias parameters



MF

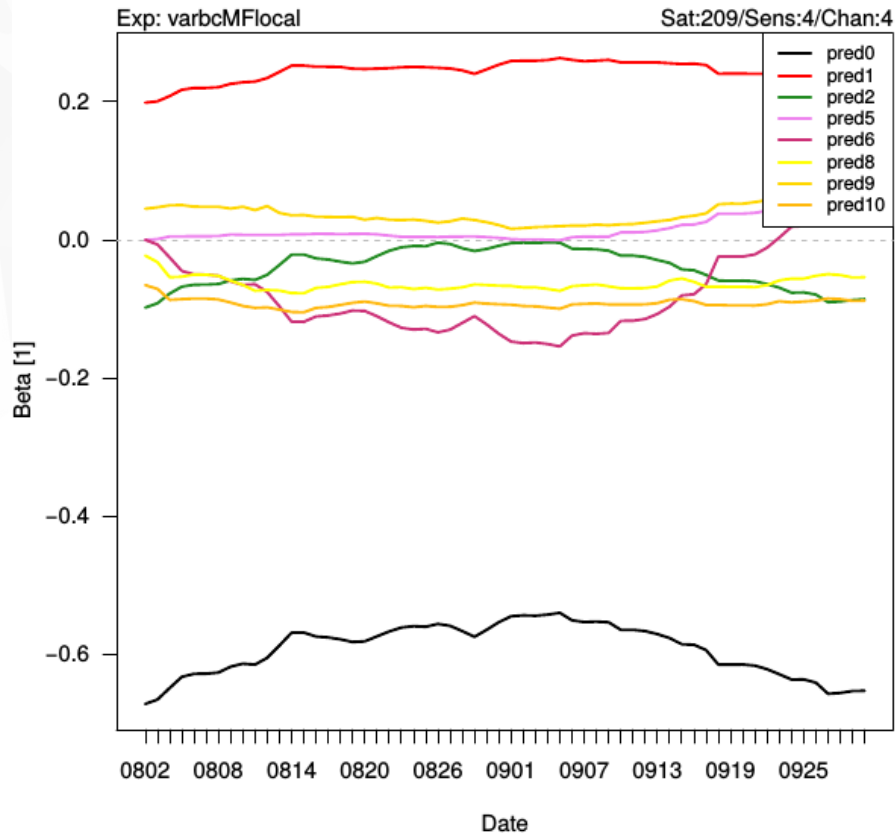
Evolution of bias parameters



NOAA 18 – AMSU-B

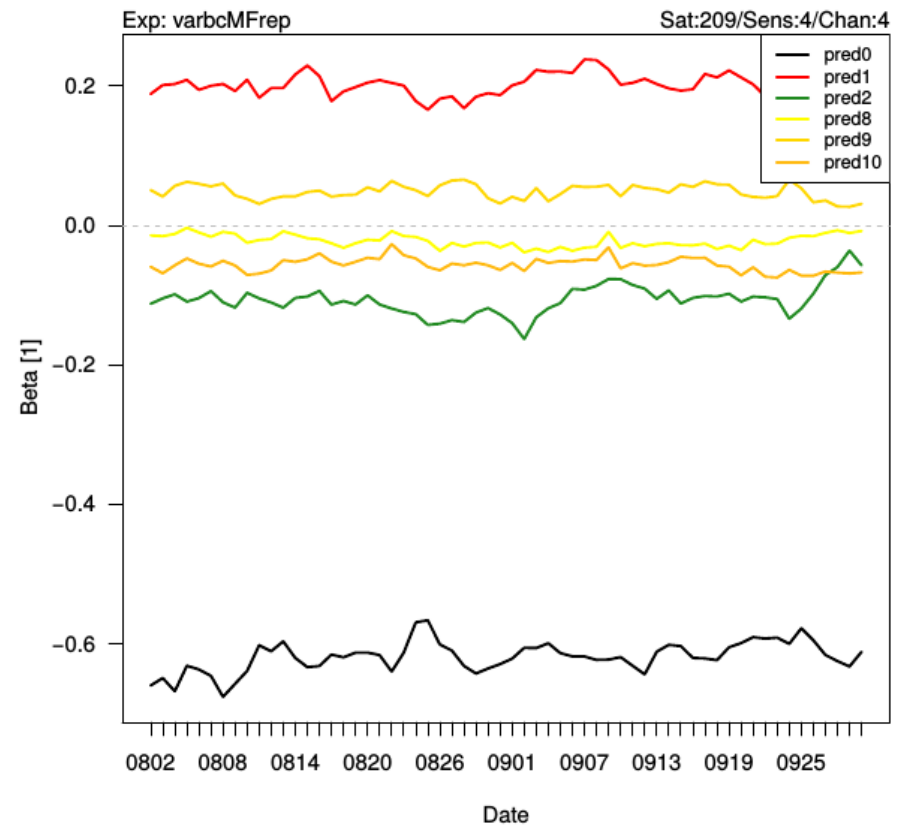
Cycled in LAM

Evolution of bias parameters



MF

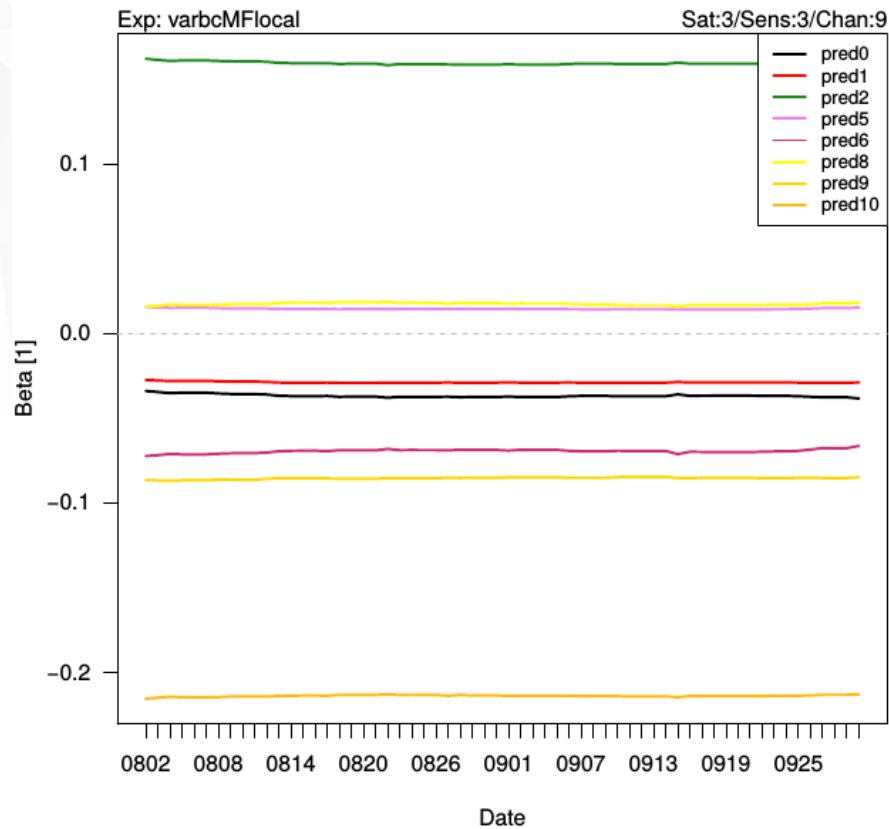
Evolution of bias parameters



METOP 3 – AMSU-A

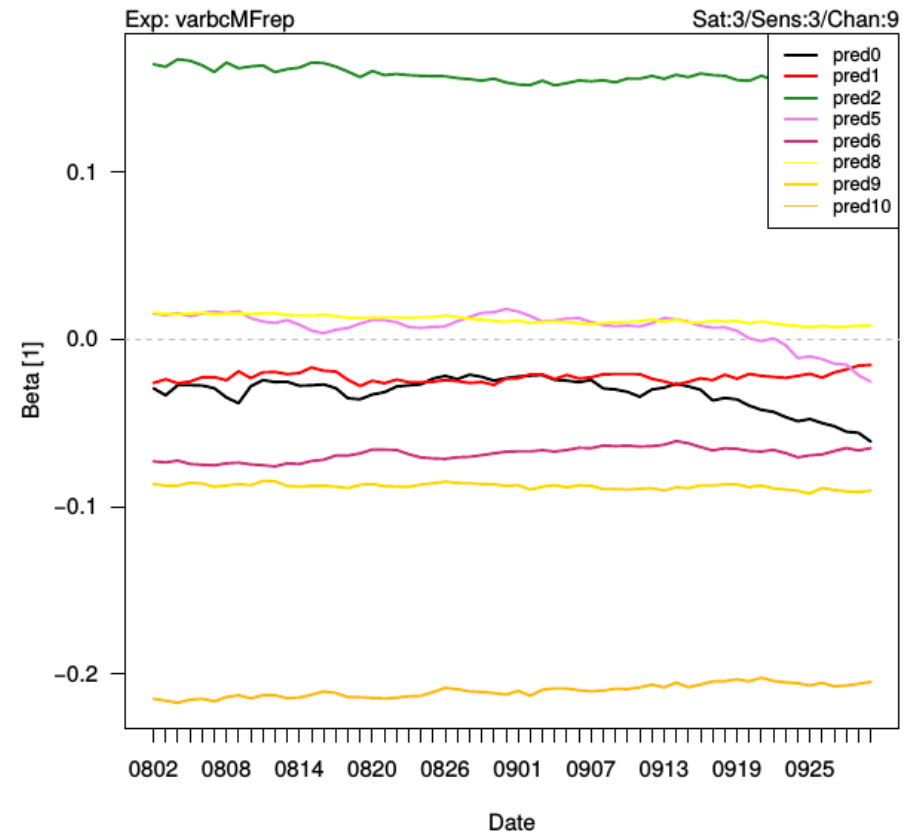
Cycled in LAM

Evolution of bias parameters



MF

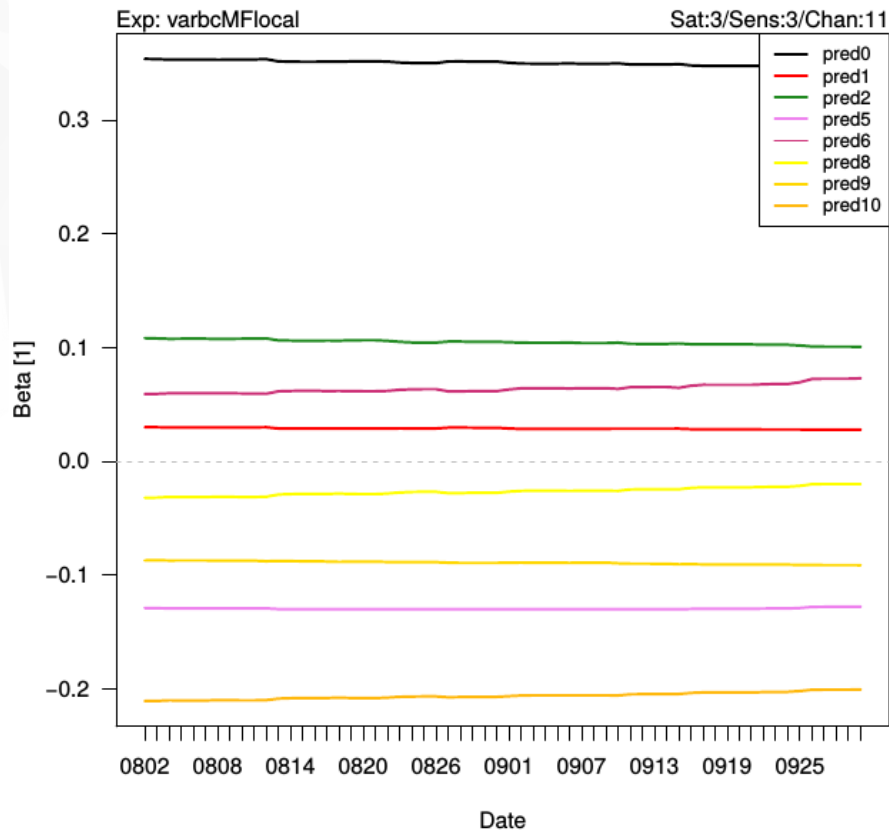
Evolution of bias parameters



NOAA 18 – AMSU-A

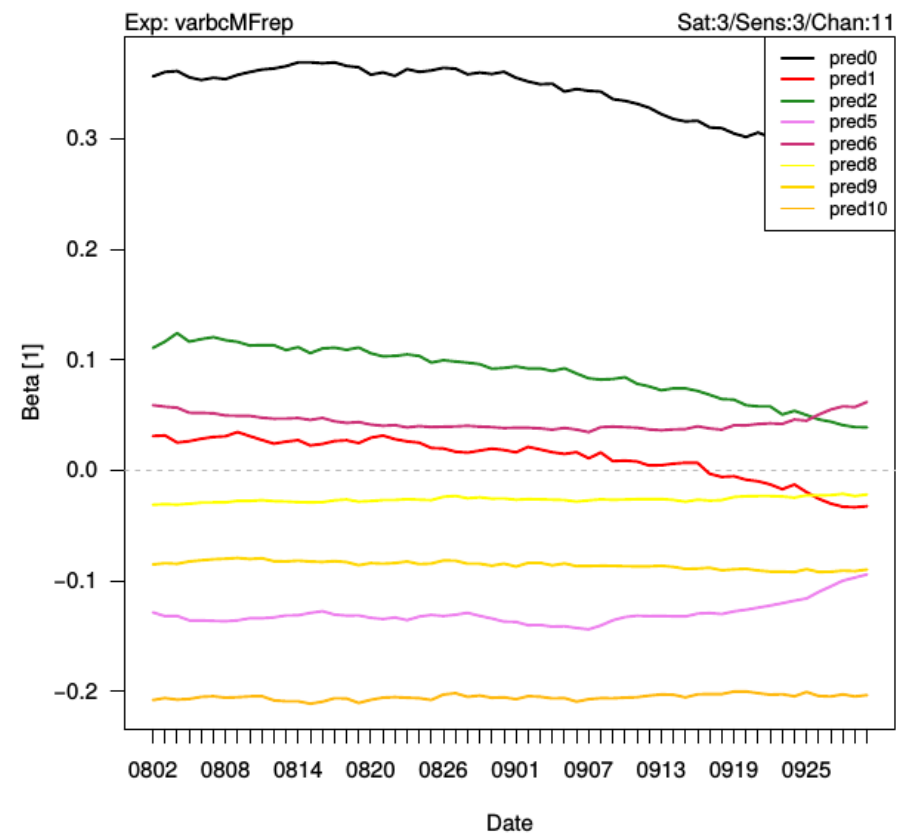
Cycled in LAM

Evolution of bias parameters



MF

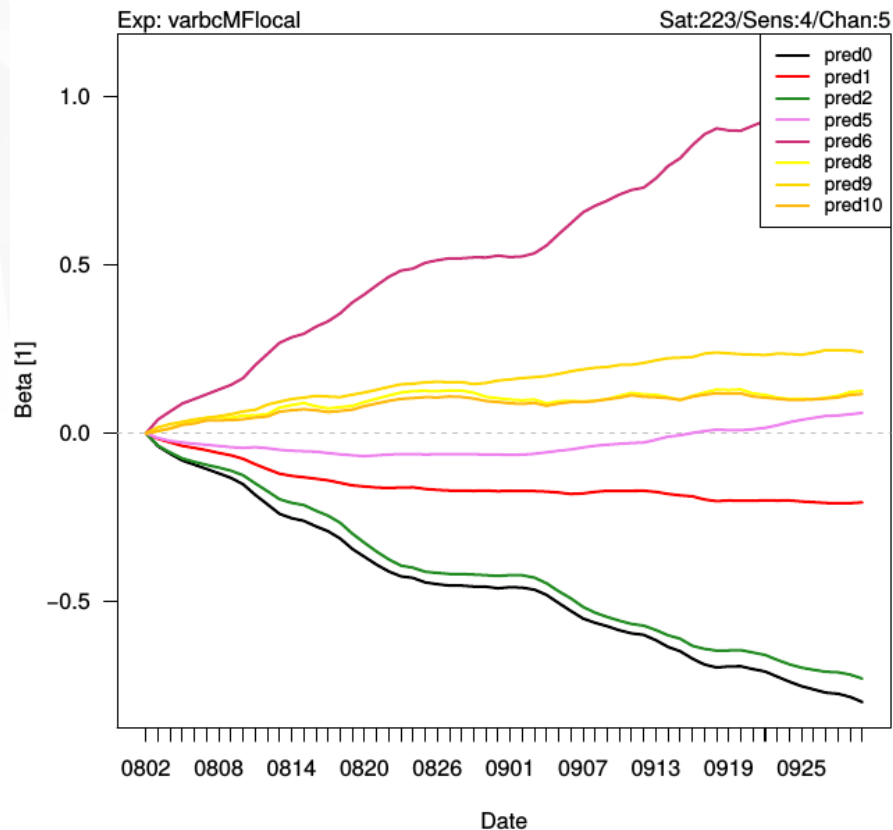
Evolution of bias parameters



Problem: NOAA 19 – MHS

Cycled in LAM

Evolution of bias parameters



MF

Evolution of bias parameters

