

ALARO-0

Experience in TURKISH STATE METEOROLOGICAL SERVICE



Tayfun DALKILIÇ



ALARO Working Days

13 - 15 June 2012, Ljubljana, Slovenia



Content

- **Operational use of ALARO at TSMS**
- **Verification results from ALARO-4.5km**
- **SST**
- **Case study (dust storm)**
- **Summary**



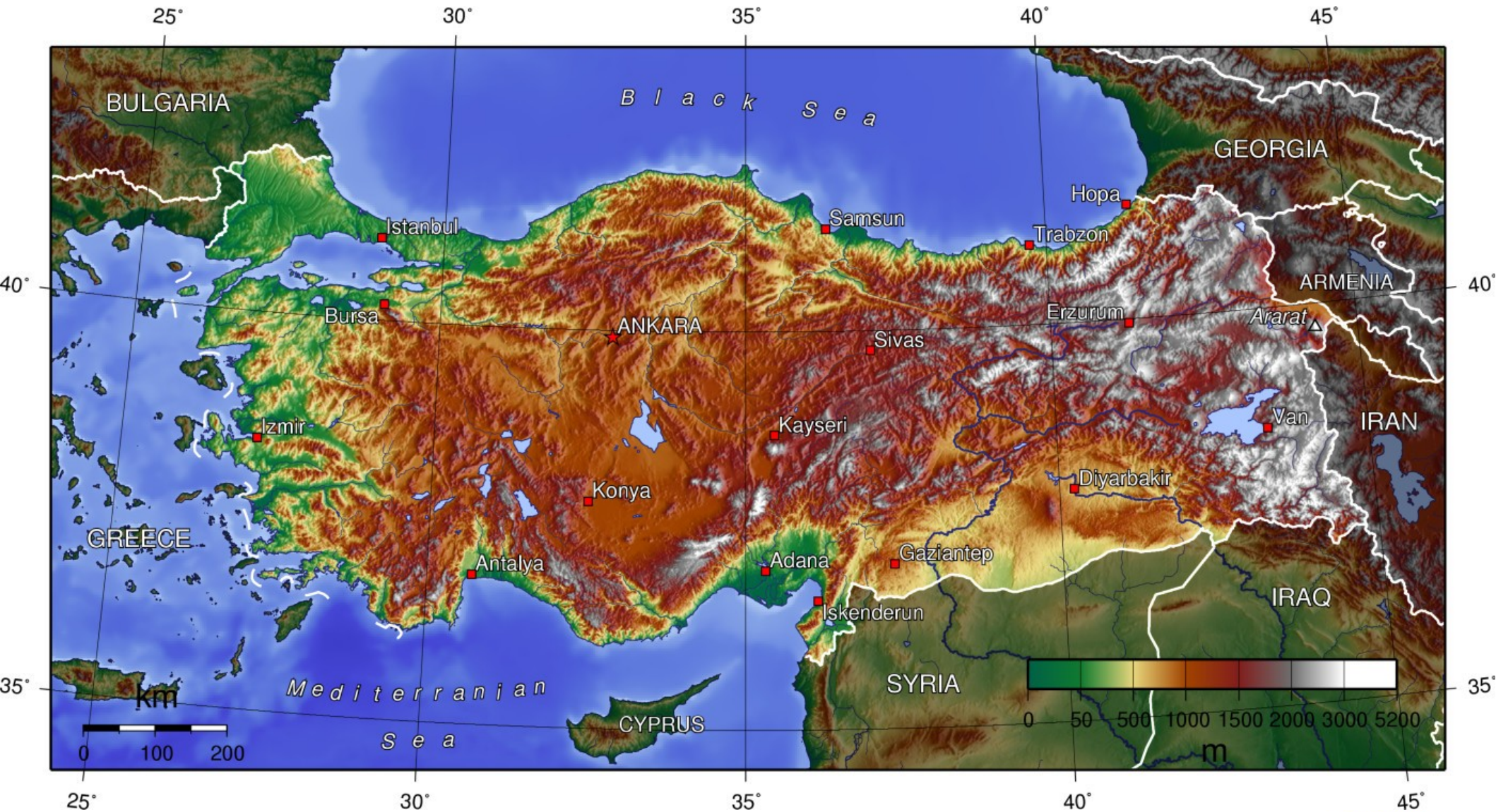
Operational use of Alaro-0 at TSMS

Operational model (AL36T1):

- Resolution: 4.5km / 60L (355x655)
- Runs : 00/06/12 +72h, 18 +60h
- Orography: envelope
- Grid : quadratic
- Time step : 300s
- Coupling : ARPEGE
- Physics : ALARO-0



Steep Orography

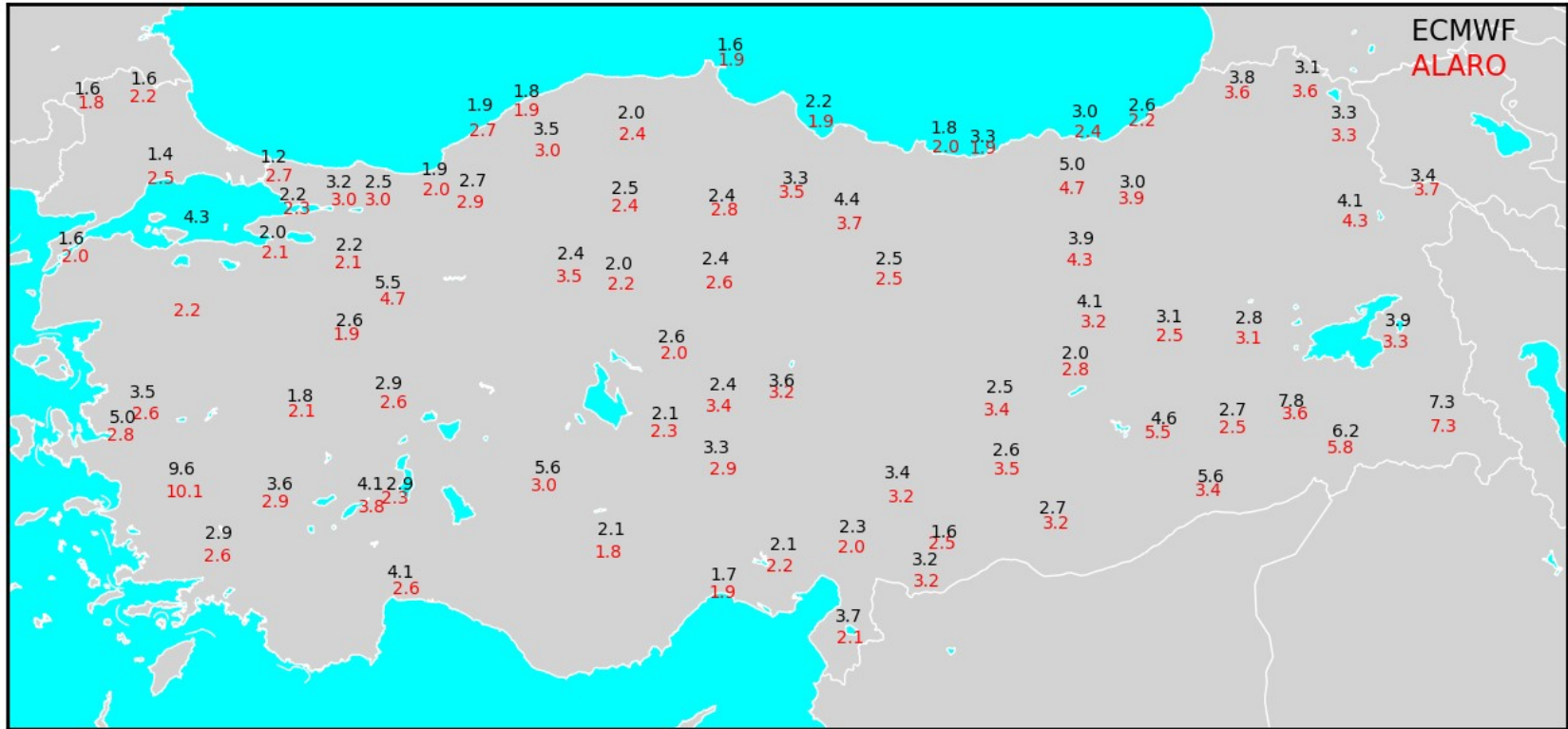


ALARO Working Days

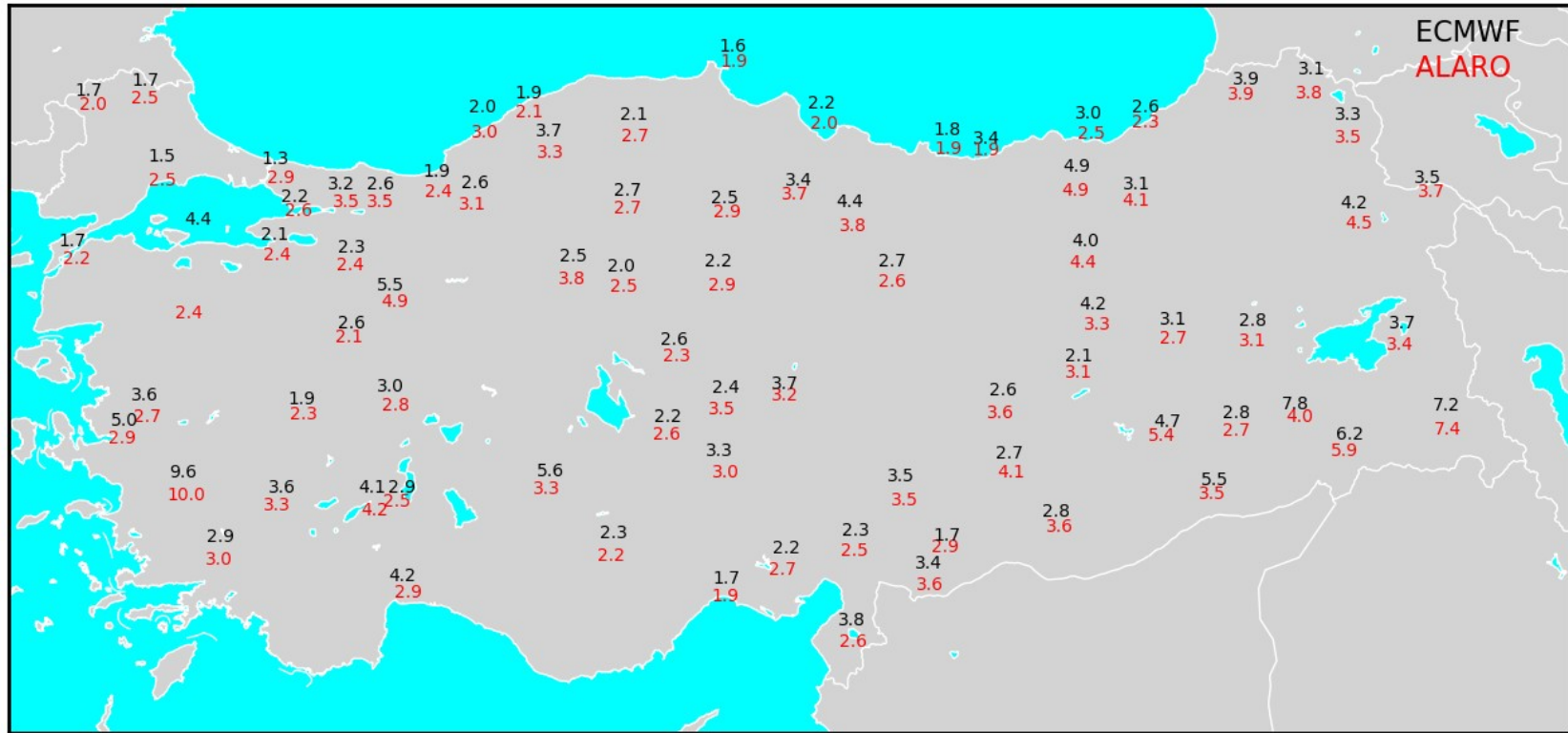
13 - 15 June 2012, Ljubljana, Slovenia



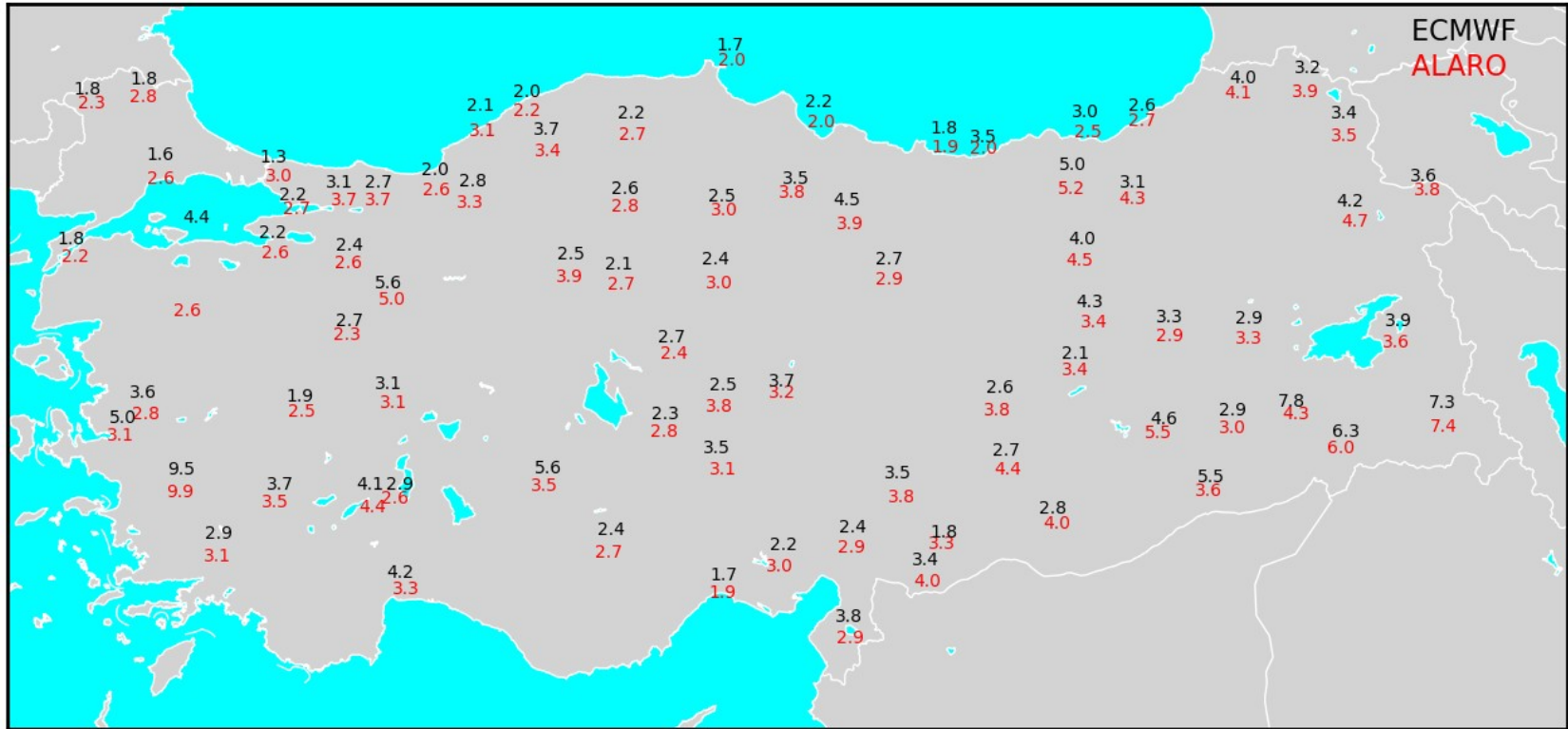
T+24 - T2M (RMS)



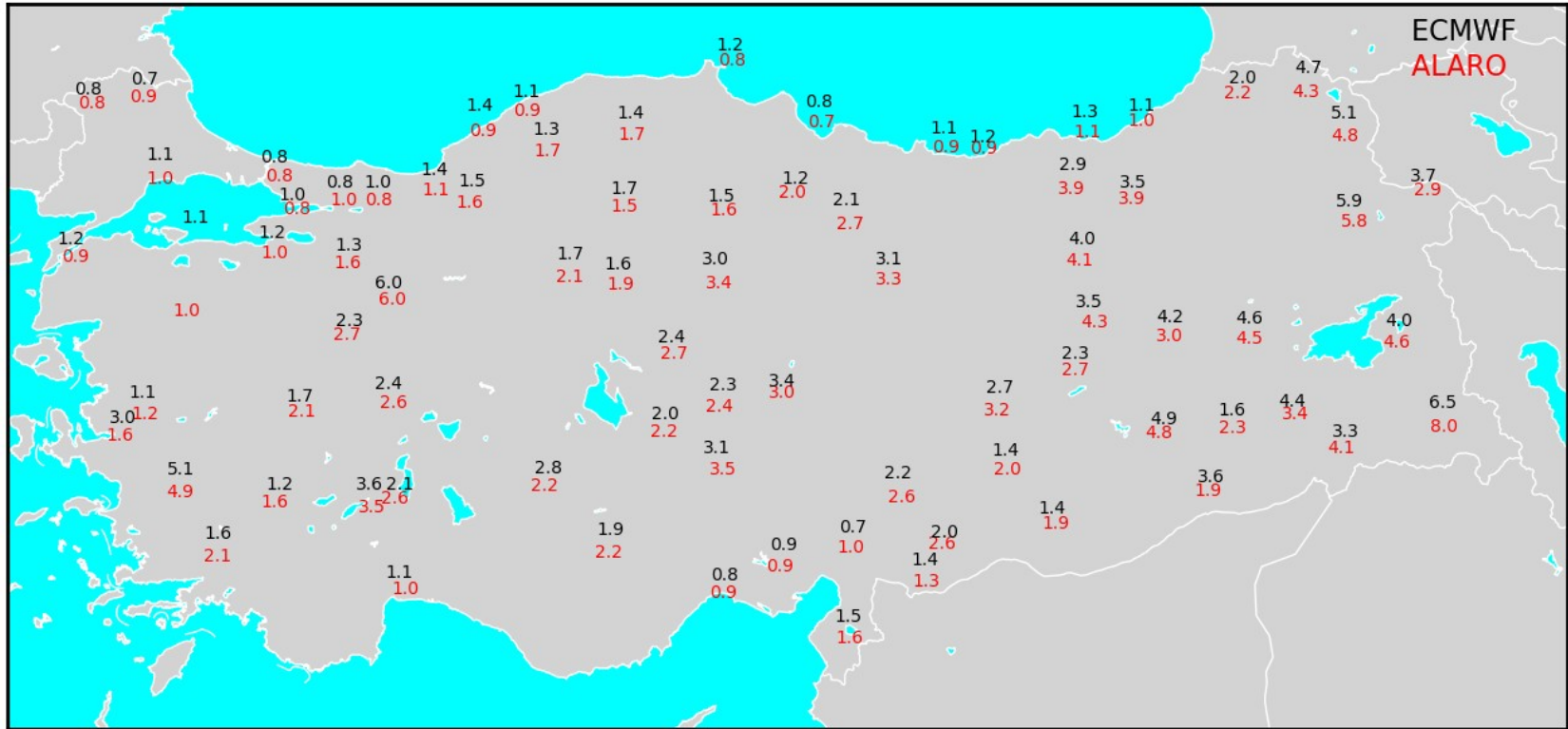
T+48 - T2M (RMS)



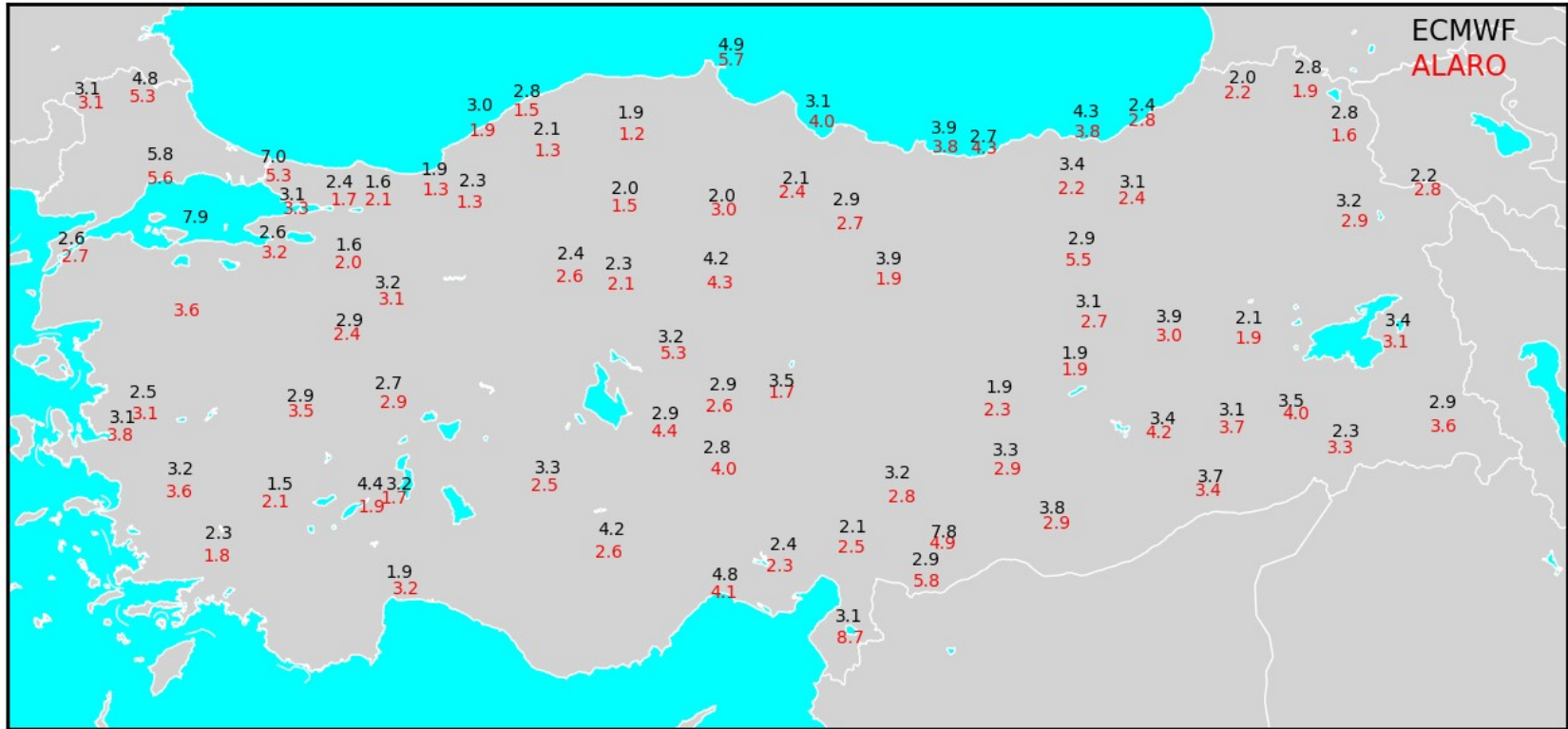
T+72 - T2M (RMS)



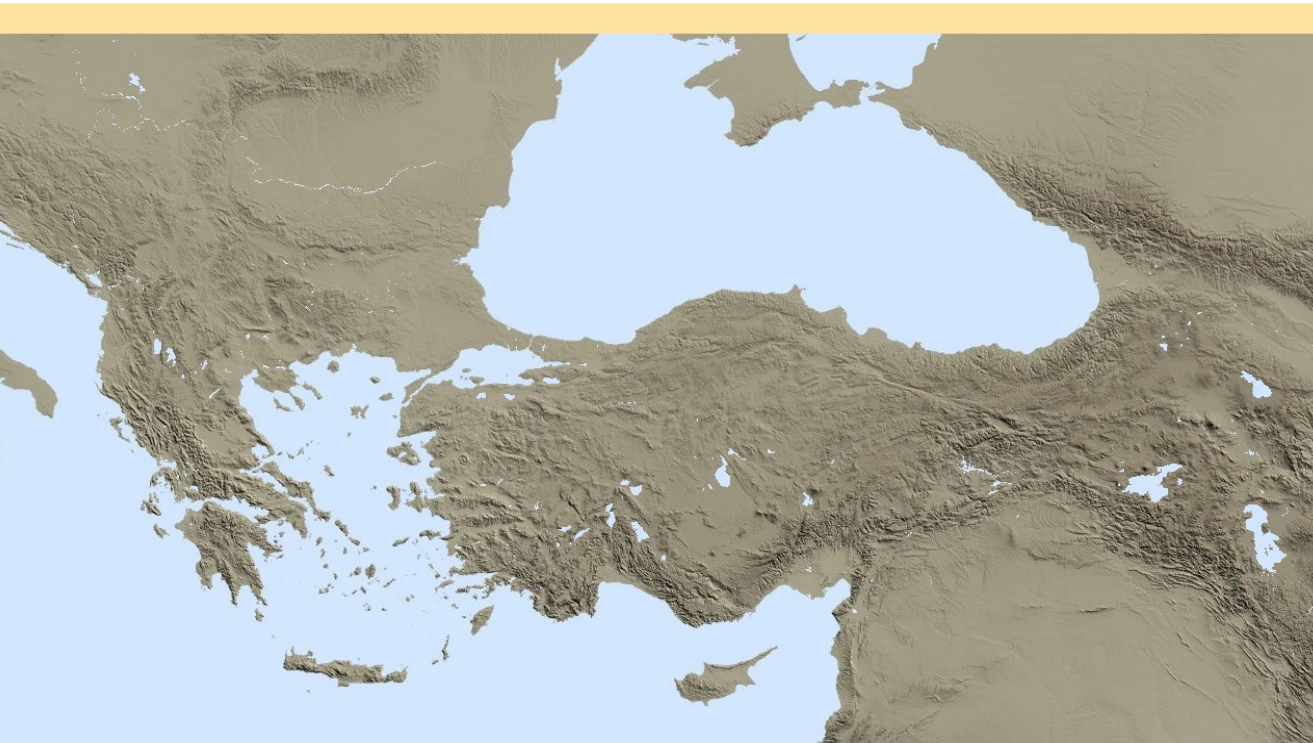
T+24 - MSLP (RMS)



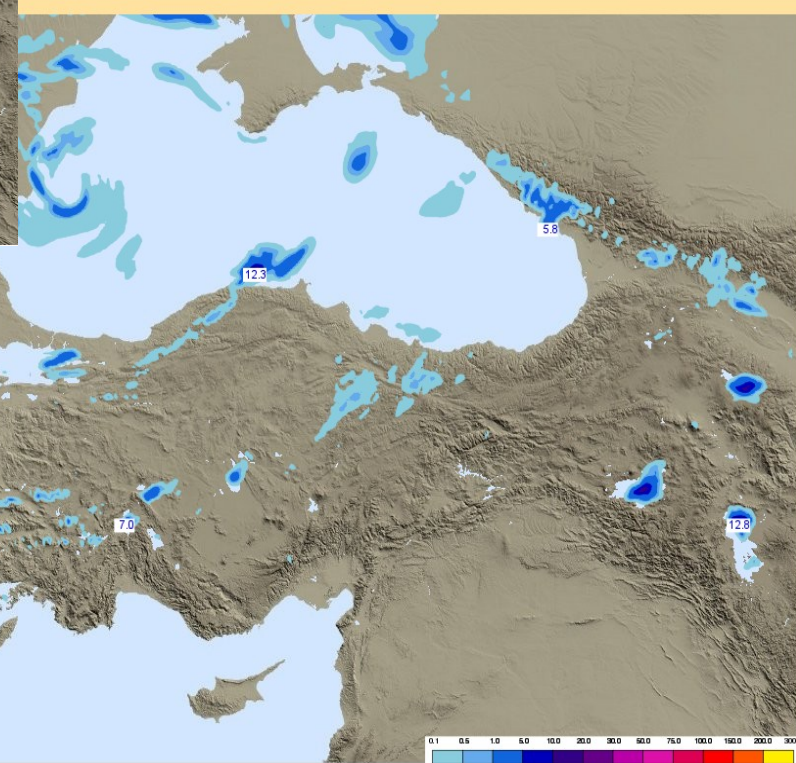
T+24 - WSPD (RMS)



Unrealistic Precipitation Over the Lakes noted as early as t+1



T (SALI) Model : ALR



SST

- Optimal Interpolation analysis assimilating SHIP and BUOY
- relaxation towards external SST dataset.

Before November 2010

- SST_NCEP_1/2
- complemented with "Reynolds SST clim"

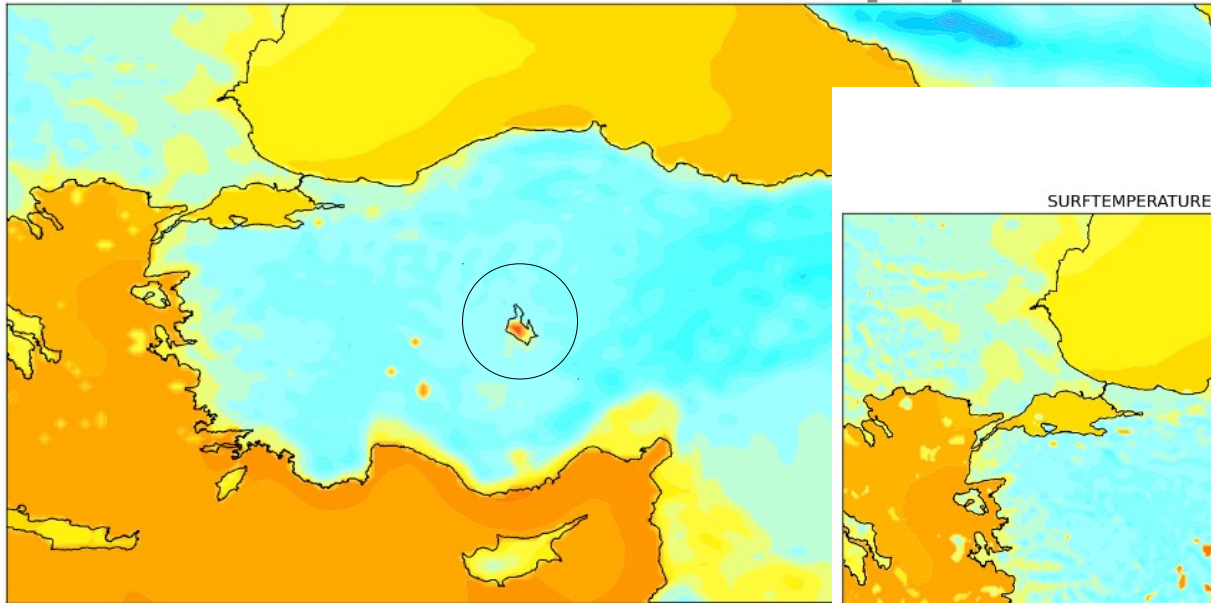
ECMWF
SST_OSTIA_1/20"
complemented with "SST_NCEP_1/2"
complementedwith "T2m monthly climatology"



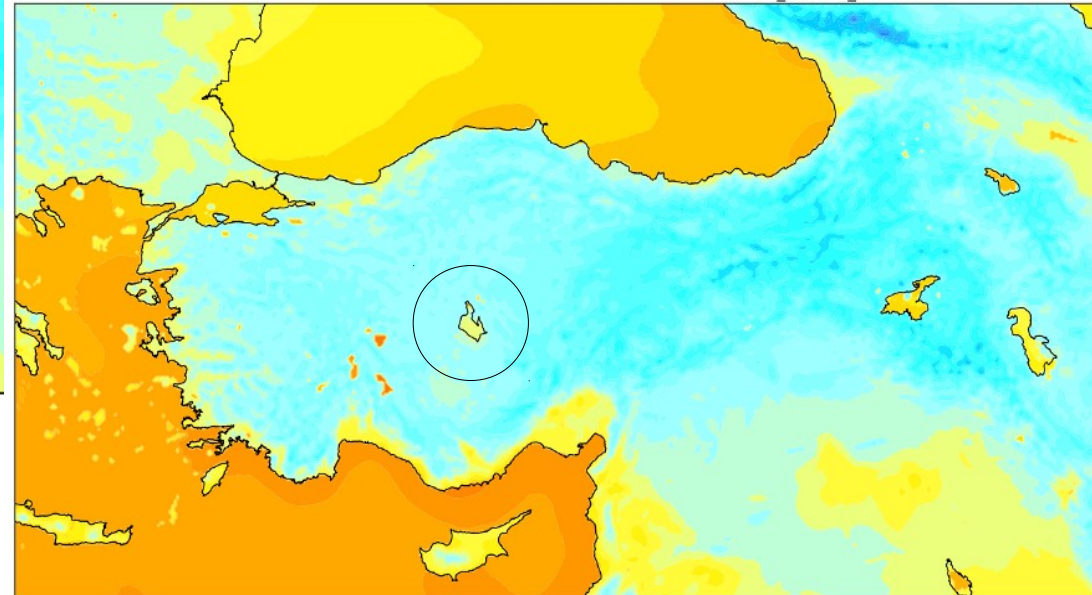
SST

- OSTIA SST analysis at $1/20^\circ$
- NESDIS SST analysis at $1/12^\circ$ and $1/2^\circ$
- Undefined SST values are filled with an interpolation of the Reynolds SST climatology

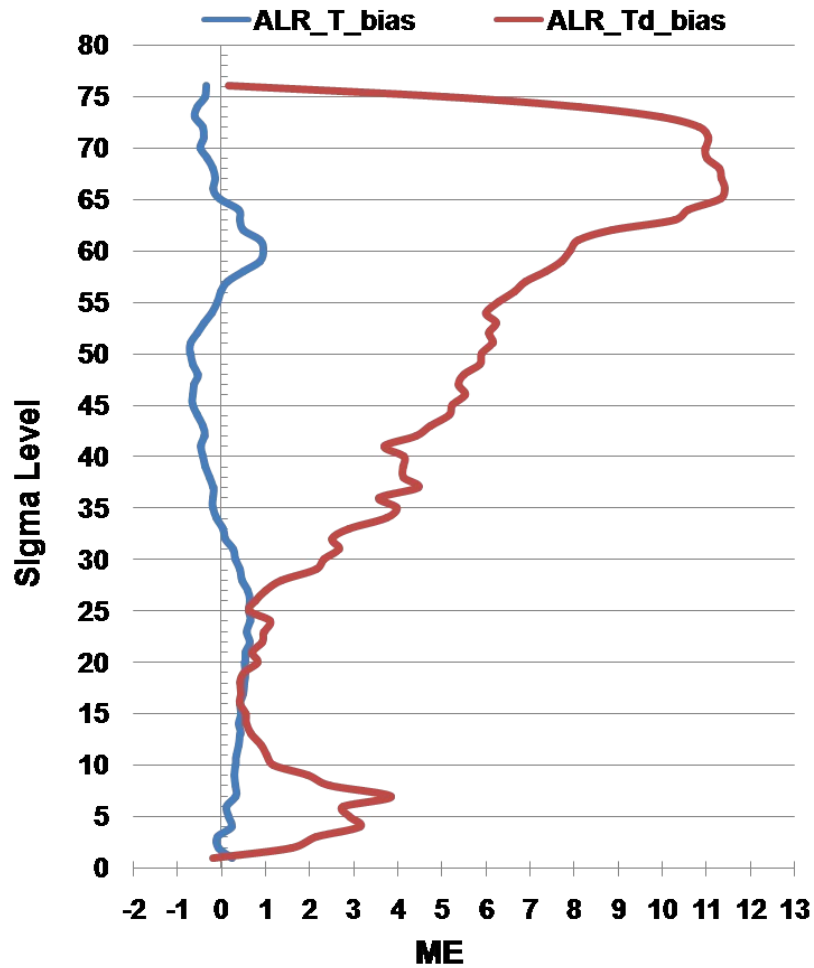
SURFTEMPERATURE ARPEGE ANALYSIS - 11.01.2011 00UTC / WITH_ARPEGE_SST



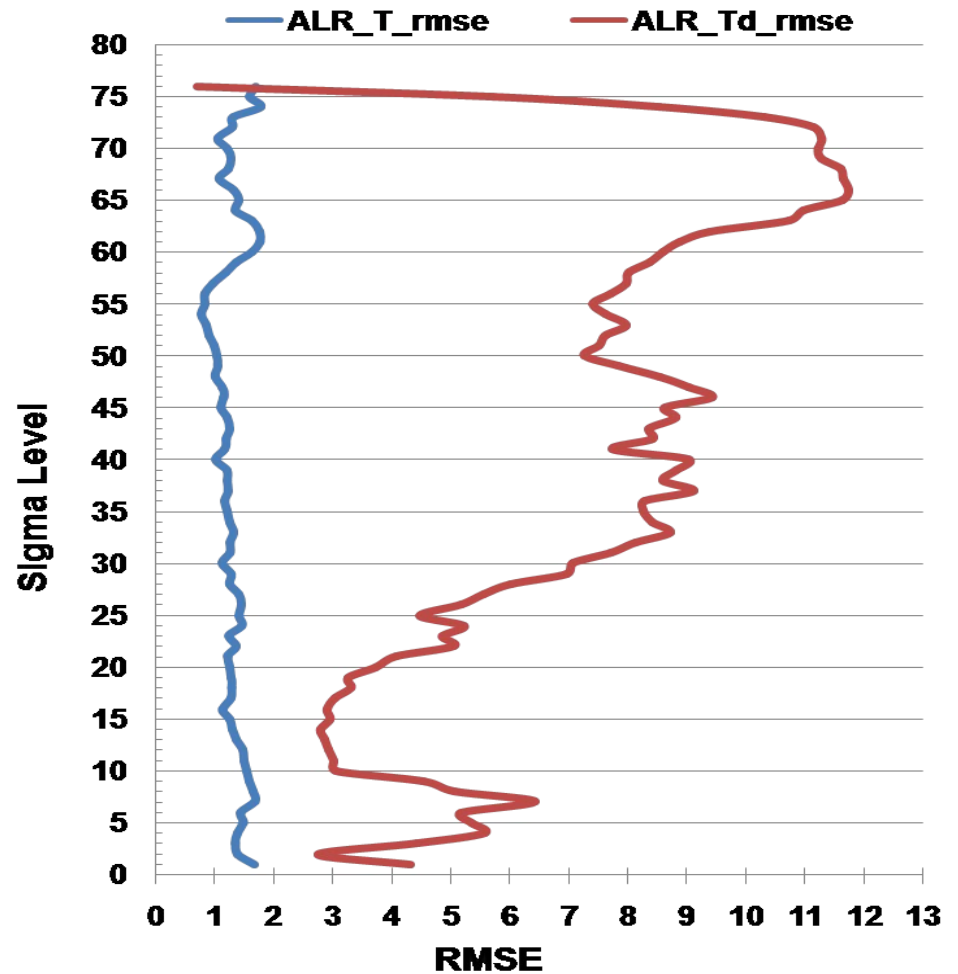
SURFTEMPERATURE ALARO ANALYSIS - 11.01.2011 00UTC / WITH_ECMWF_SST



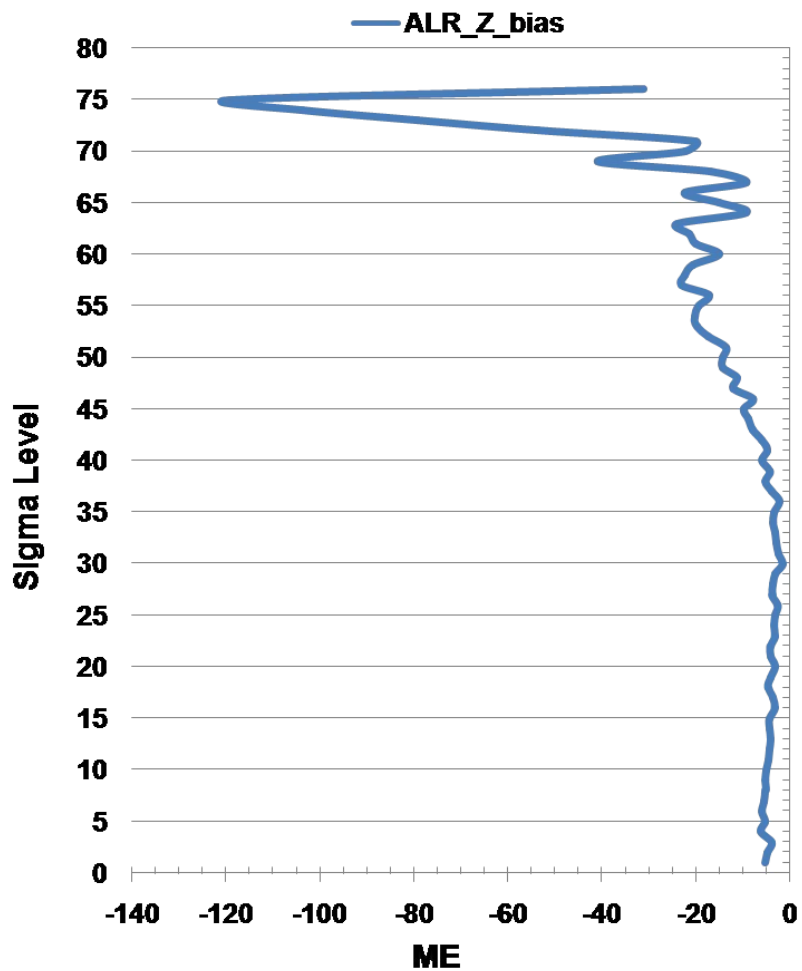
Turkey T&Td



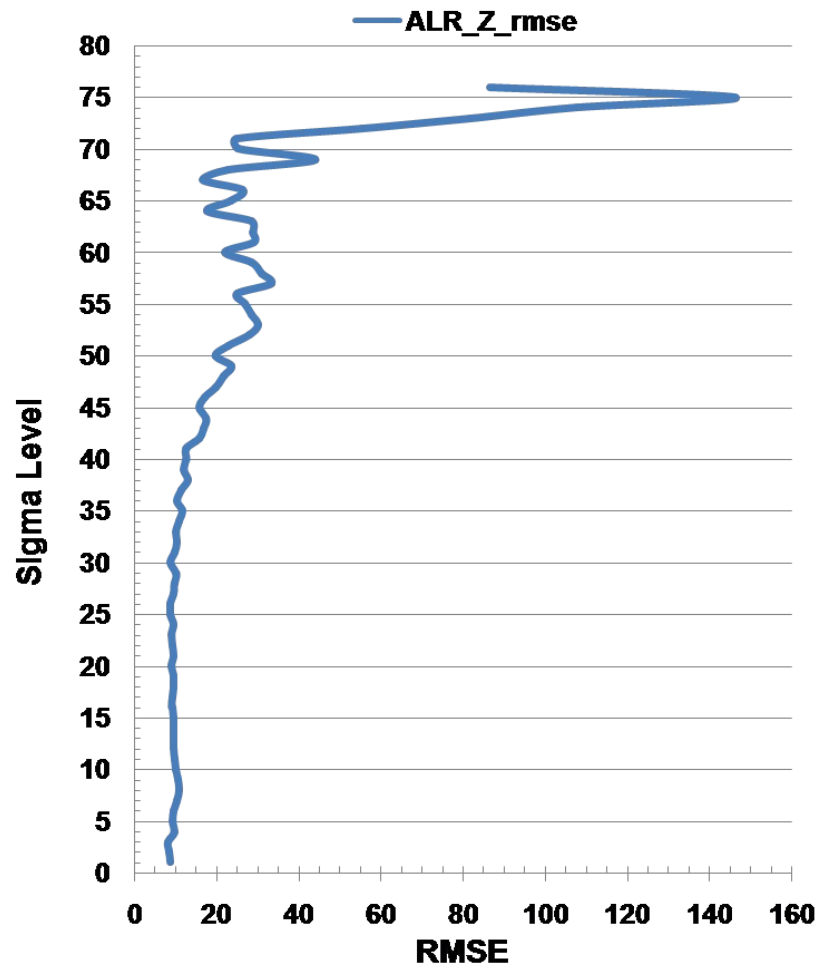
Turkey T&Td



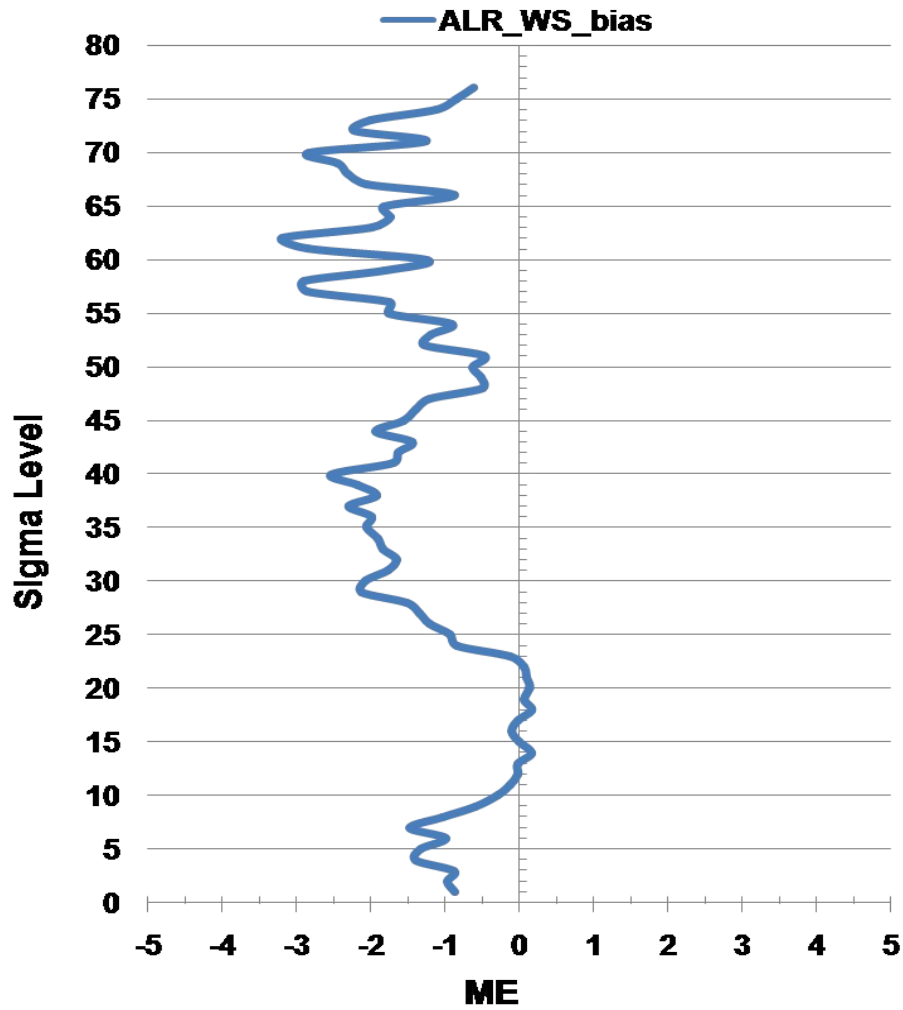
Turkey Z



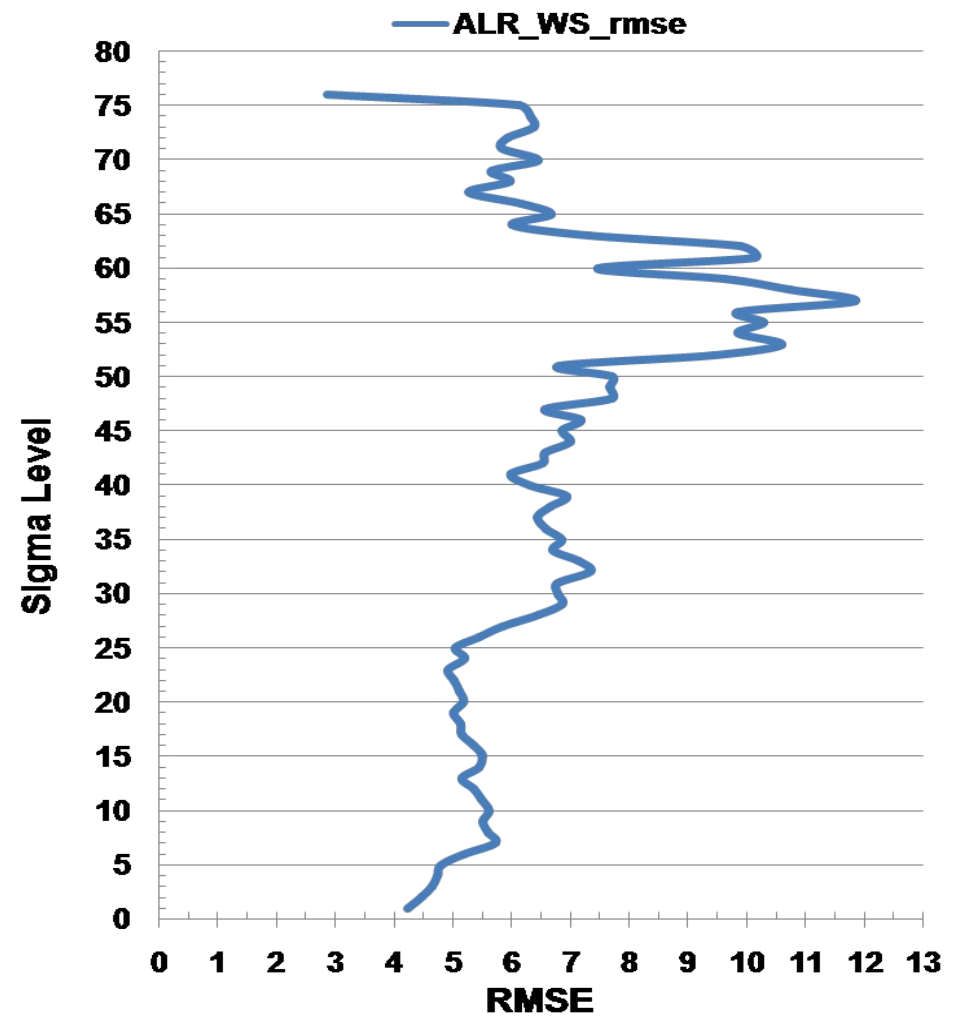
Turkey Z

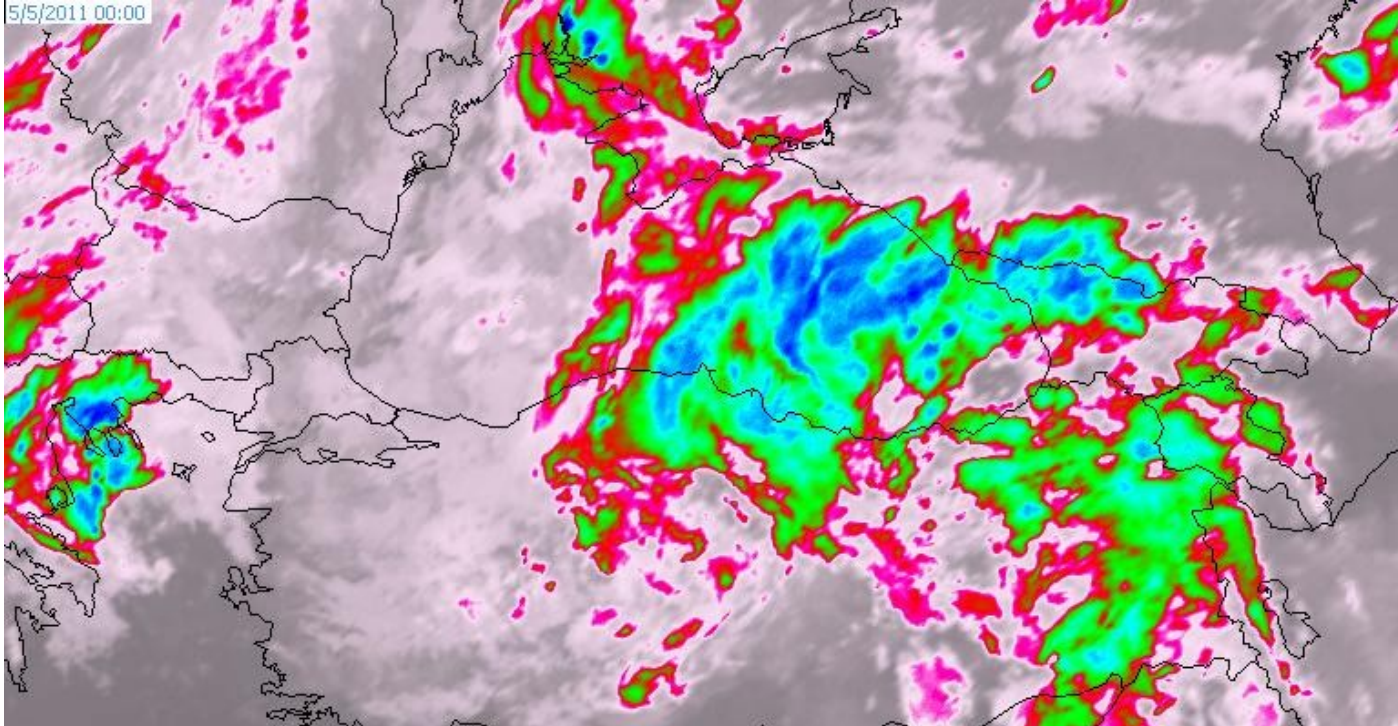


Turkey WS

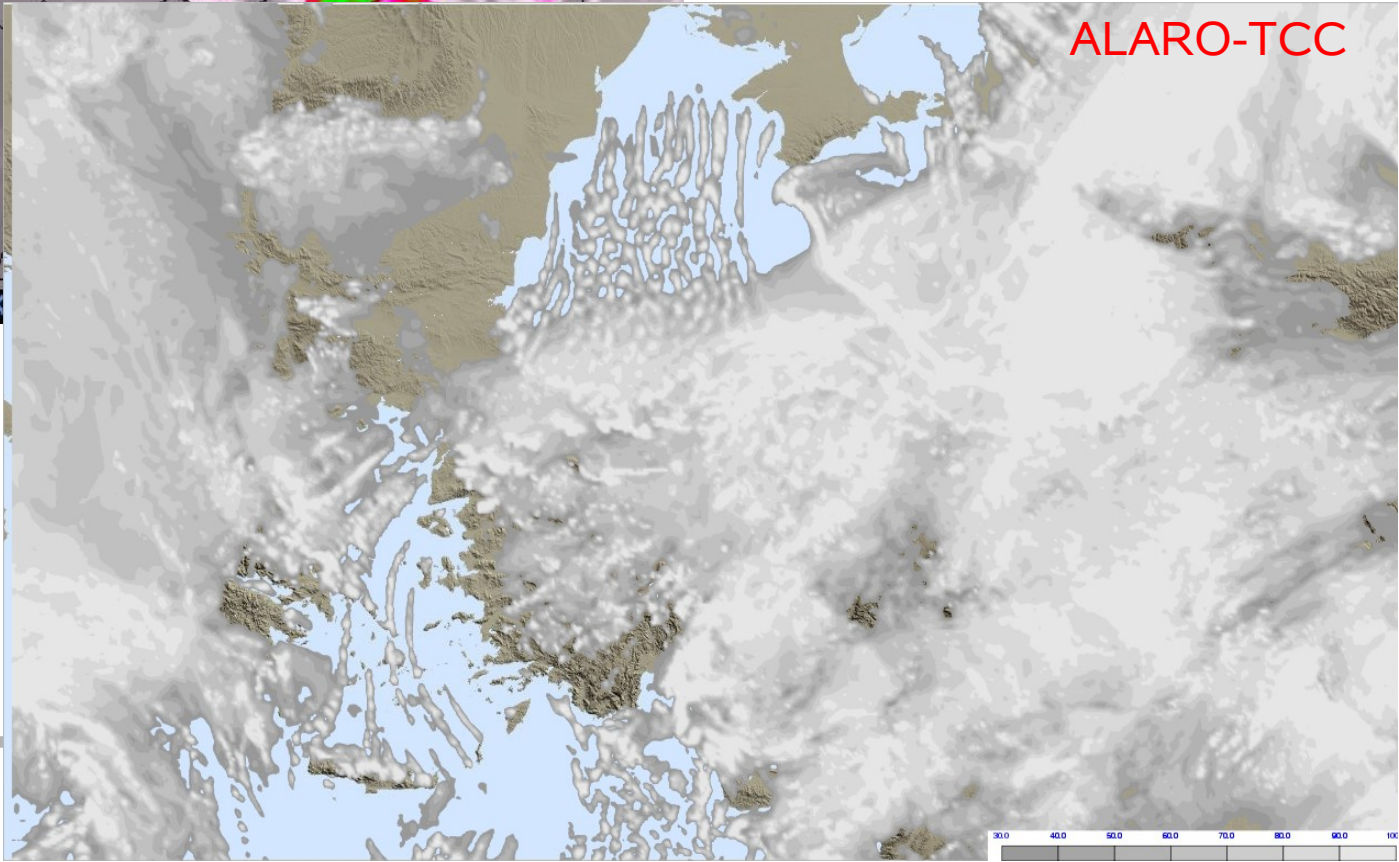


Turkey WS



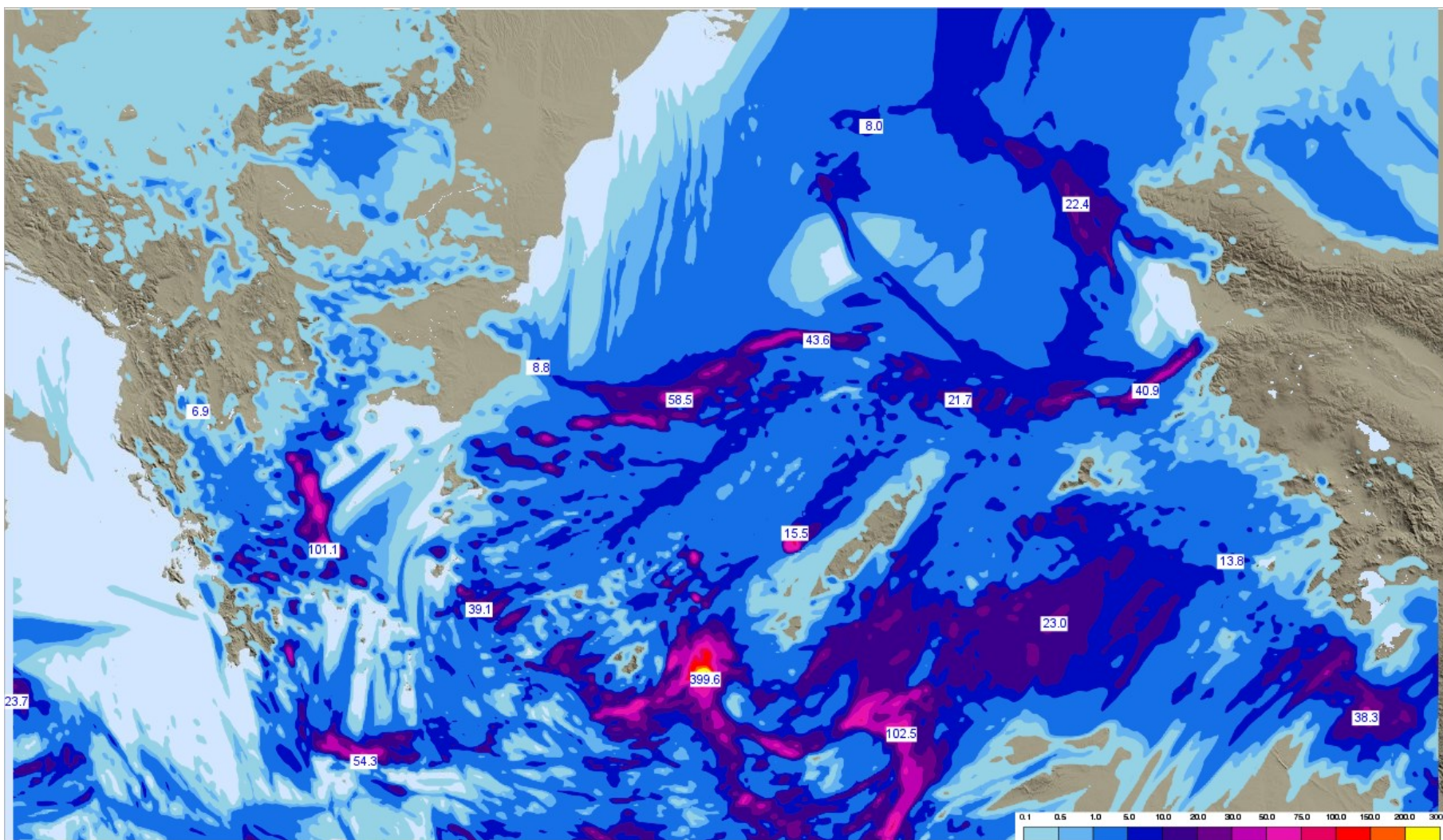


05.May.2011 00Z
MSG & ALARO-TCC



Quadratic Truncation

LSPSMOR0=.F. (LNEWOR0, LNEWOR02 = .F.,.F.)



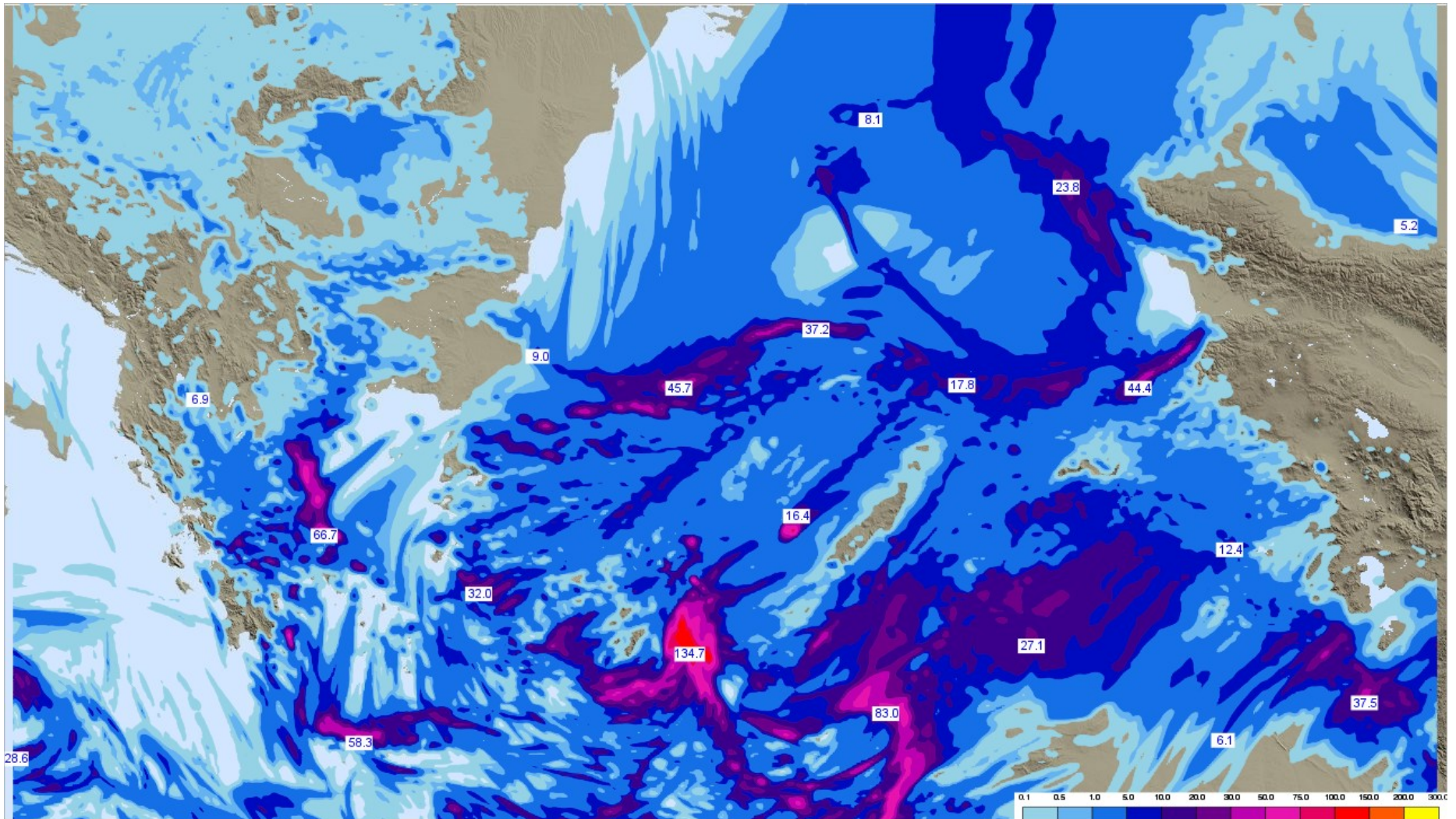
ALARO Working Days

13 - 15 June 2012, Ljubljana, Slovenia



Linear Truncation

LSPSMORO=.T. (LNEWORO, LNEWORO2 = .F.,.F.)

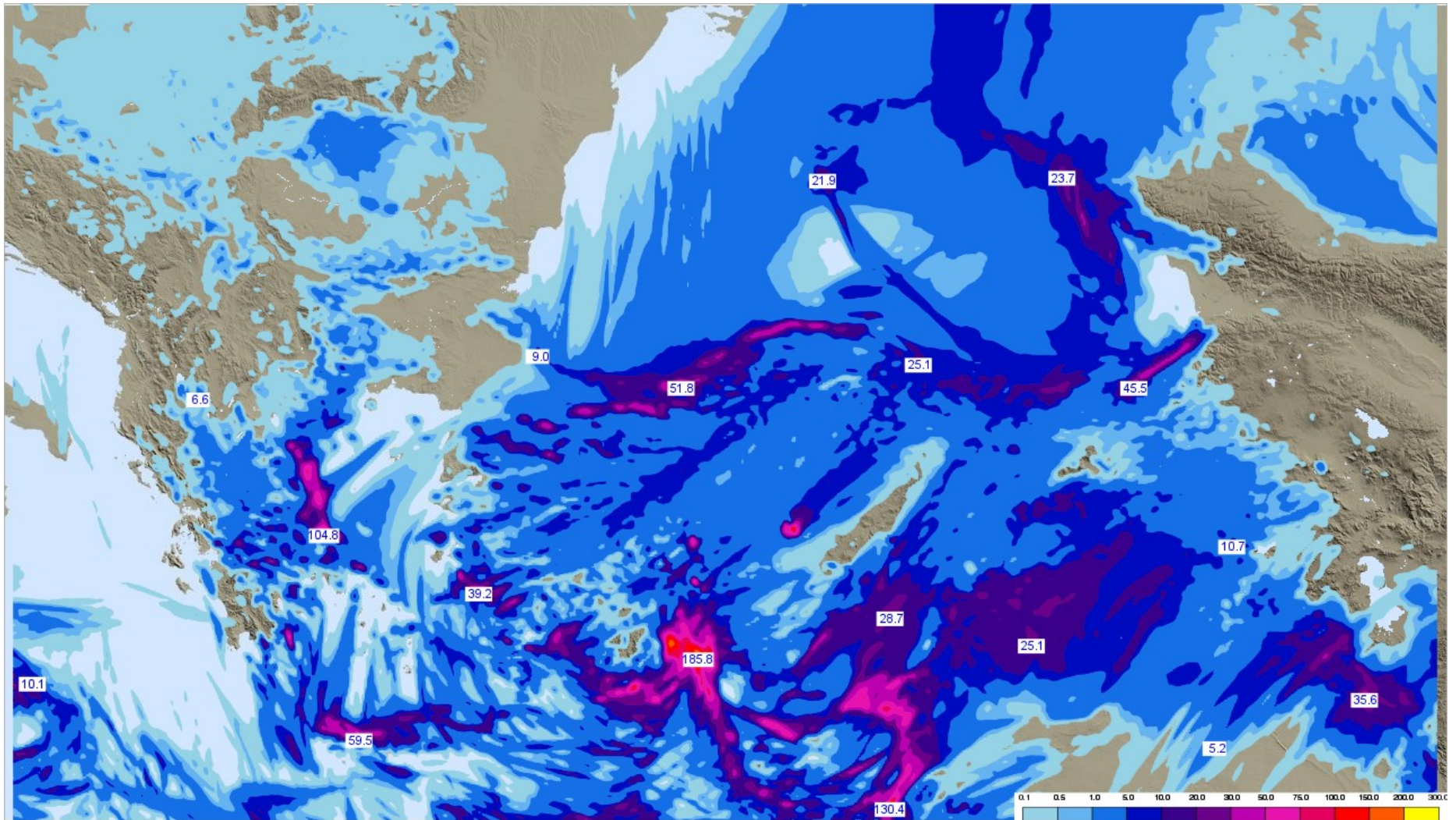


ALARO Working Days

13 - 15 June 2012, Ljubljana, Slovenia



Vertical Finite-Element (VFE)



ALARO Working Days

13 - 15 June 2012, Ljubljana, Slovenia

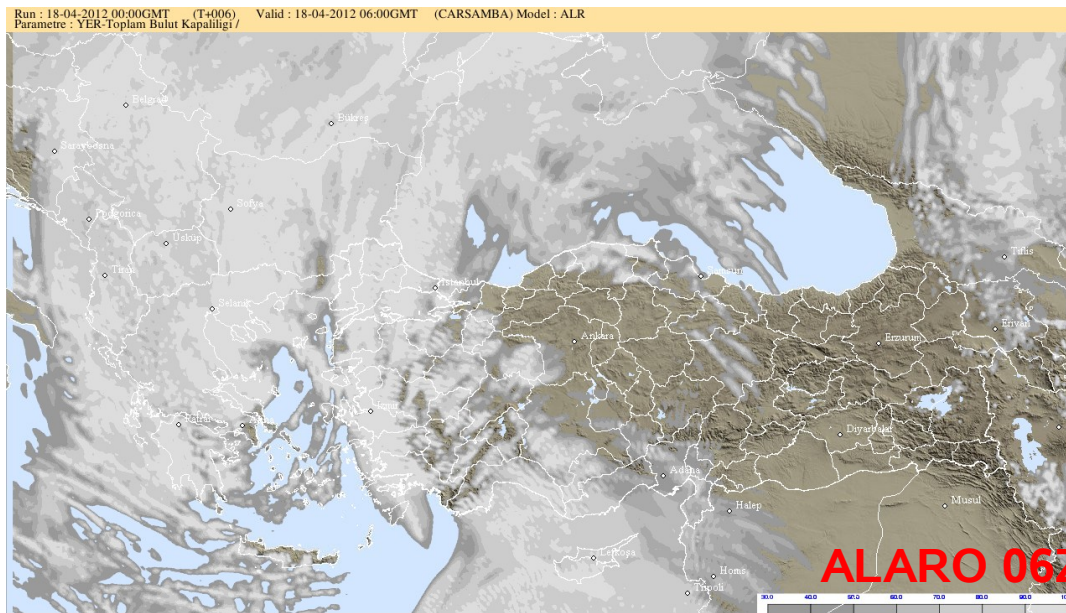


Recent Case



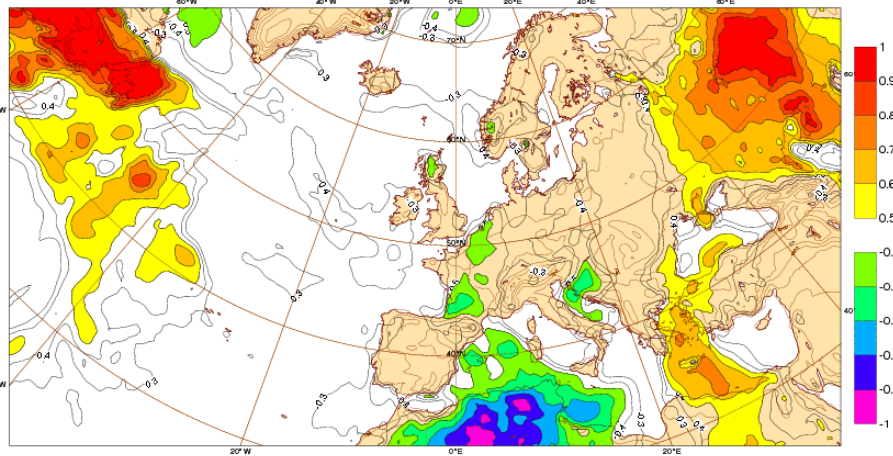
MSG 06Z

**18.04.2012
Dust Storm**



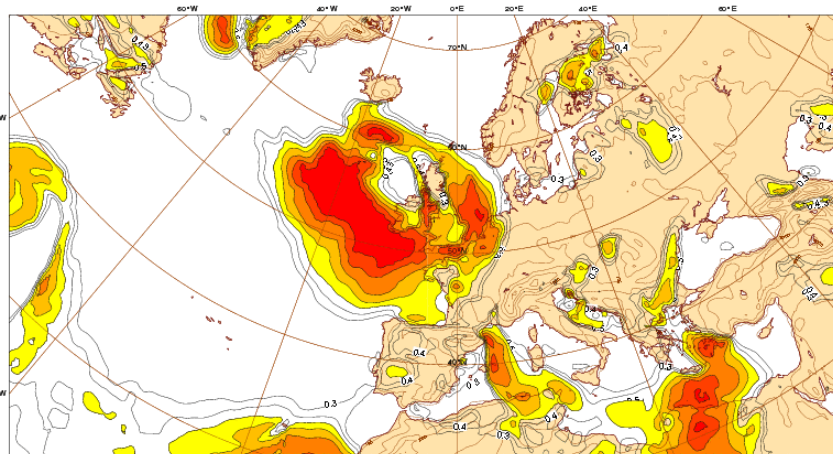
EFI 17-18.04 2012 T2M

Tuesday 17 April 2012 00UTC ©ECMWF Extreme forecast index I+000-024 VT: Tuesday 17 April 2012 00UTC - Wednesday 18 April 2012 00UTC
Surface: 2 metre temperature index



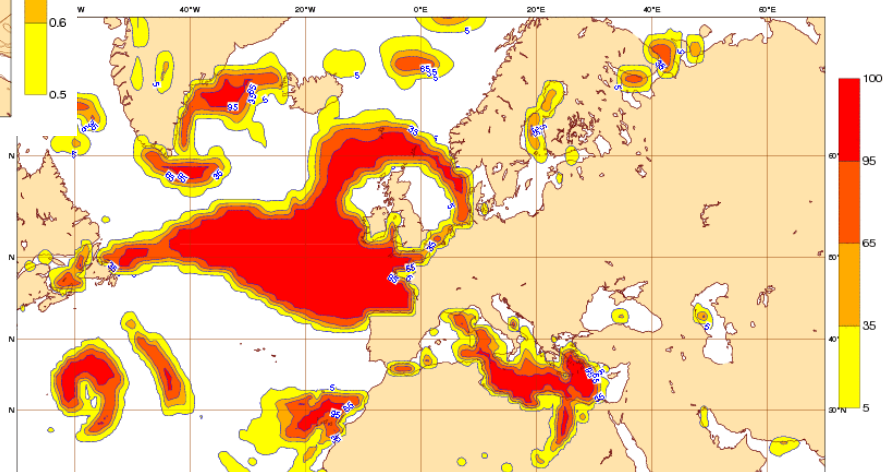
EFI 17-18.04 2012 Wind Gust

Tuesday 17 April 2012 00UTC ©ECMWF Extreme forecast index I+000-024 VT: Tuesday 17 April 2012 00UTC - Wednesday 18 April 2012 00UTC
Surface: 10 metre wind gust index



EPS 18.04 2012 00GMT 10m Wind > 10m/s

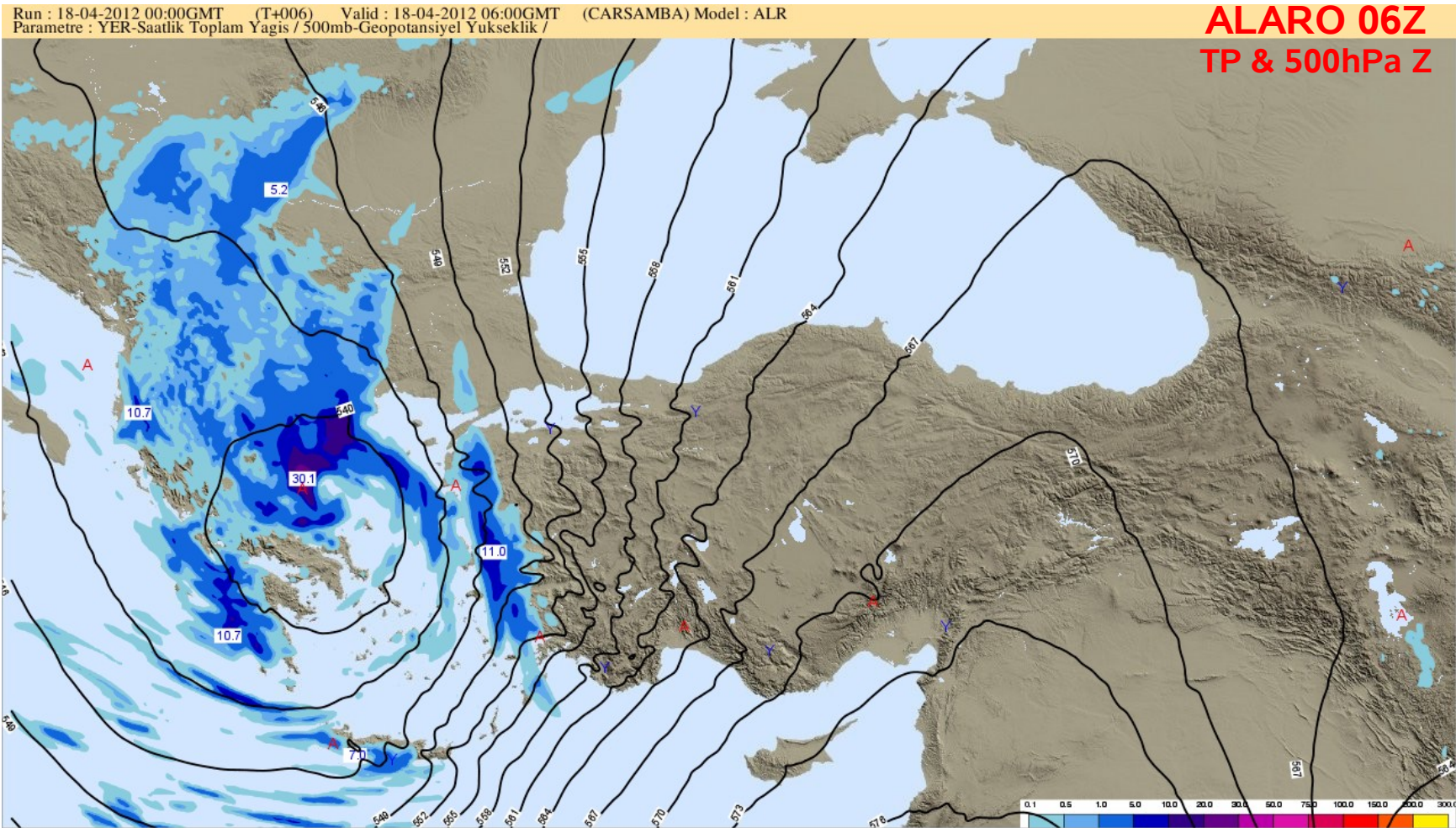
April 2012 12UTC ©ECMWF Forecast probability I+012 VT: Wednesday 18 April 2012 00UTC
metre Wind speed of at least 10 m/s



ALARO Working Da

13 - 15 June 2012, Ljubljana

Recent Case



ALARO Working Days

13 - 15 June 2012, Ljubljana, Slovenia

